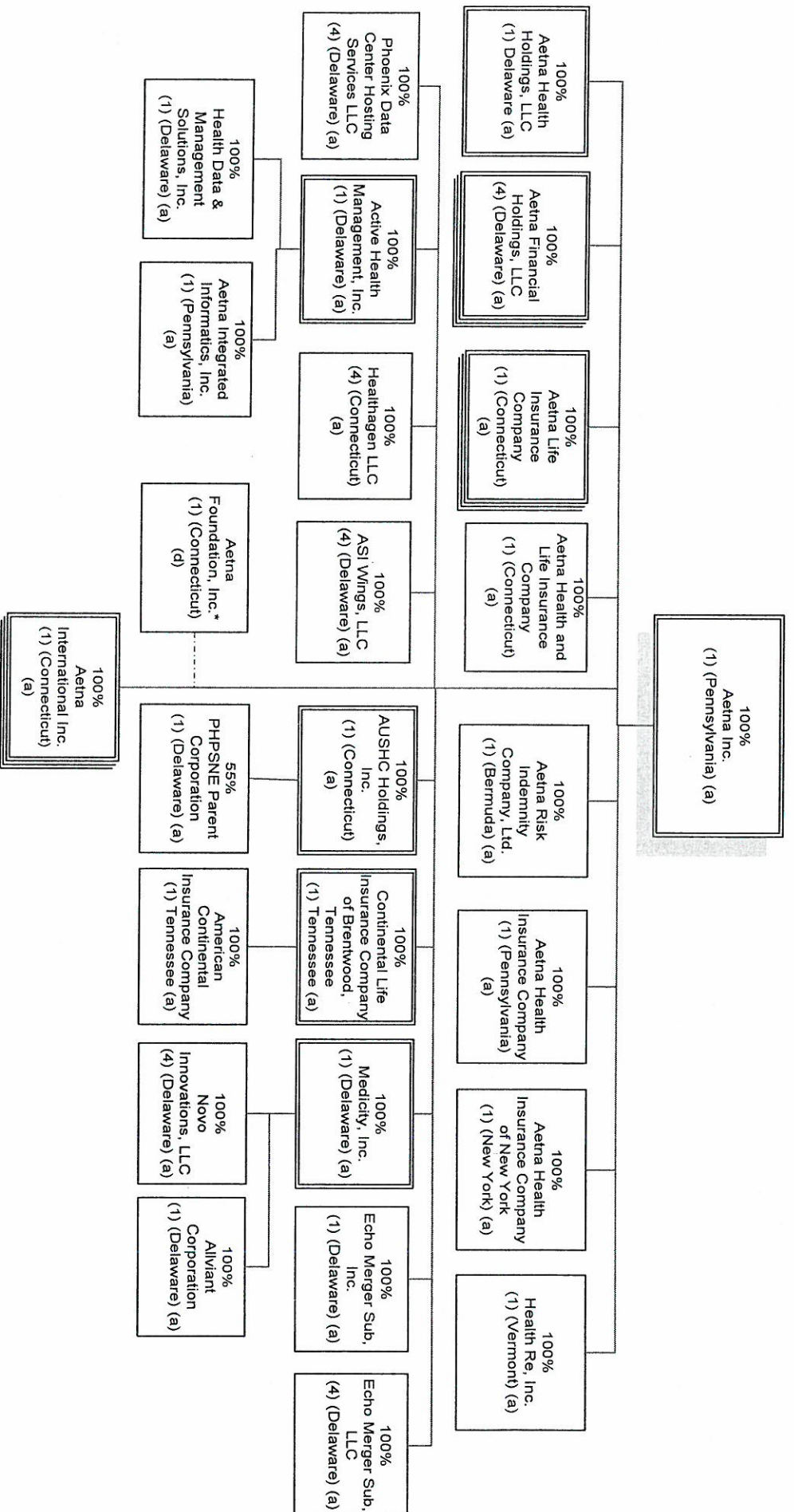


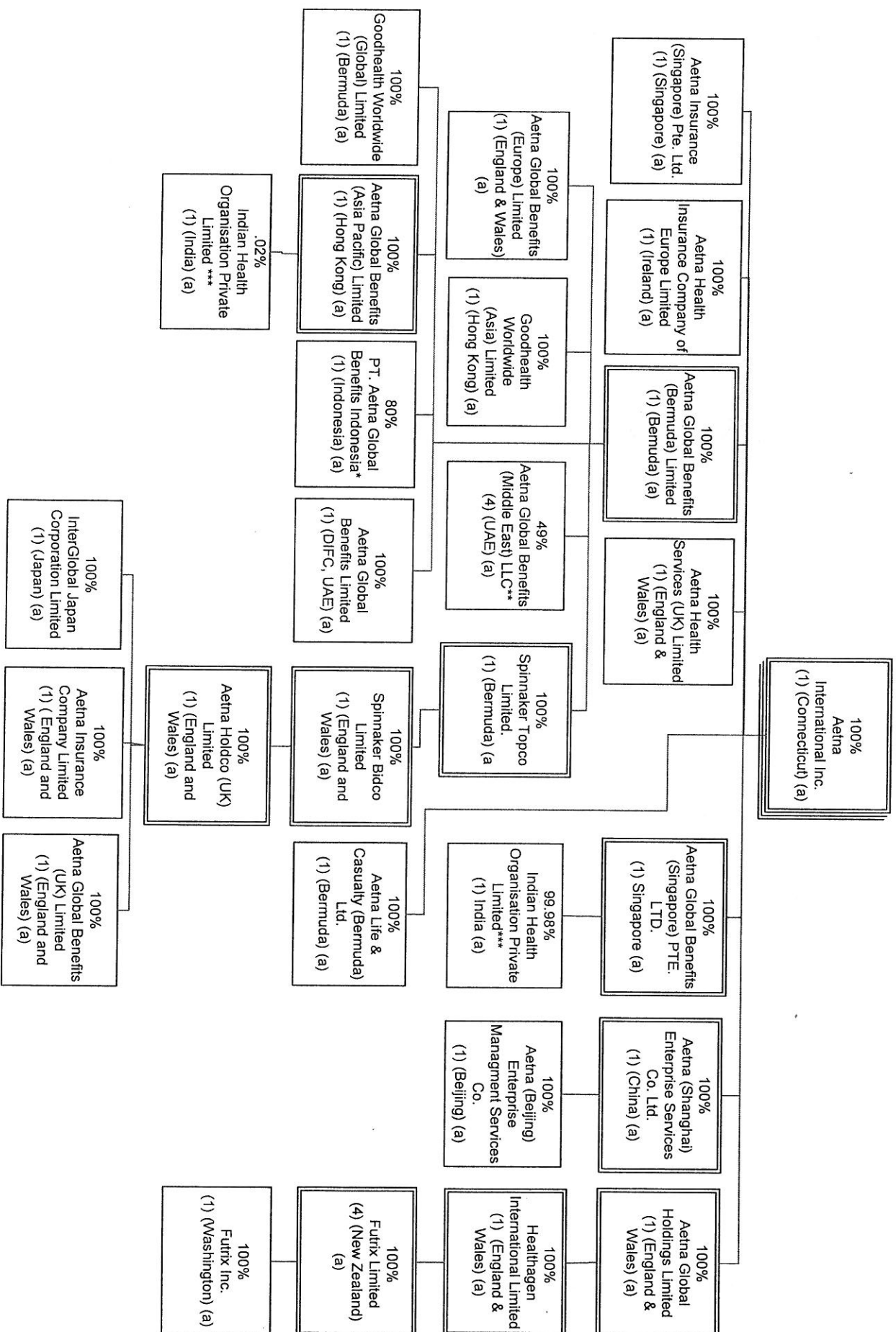
Exhibit 4-A Current organizational chart of Aetna and its affiliates.

Aetna Inc. Organization Chart
As of June 30, 2015



- (1) Corporation
- (2) Partnership
- (3) Joint Venture
- (4) Limited Liability Company
- (5) Trust
- (a) Consolidated
- (b) One Line Consolidation (i.e., equity method)
- (c) Separate Account Asset
- (d) Not consolidated

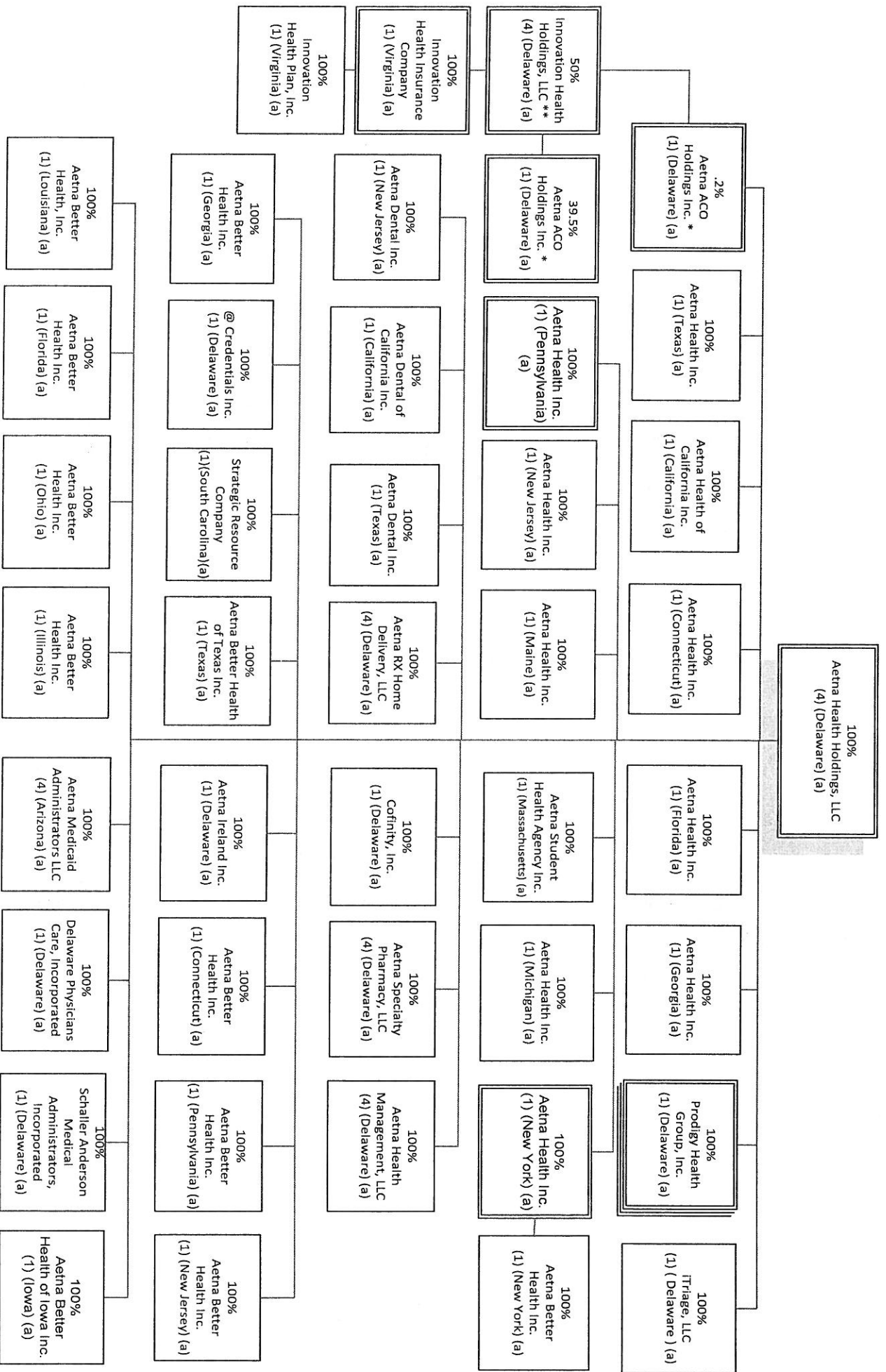
Percentages are rounded to nearest whole percent and are based on ownership of voting rights.
* Nonstock Corporation: Aetna does not control this entity. Stand-alone.



* 20% owned by Suhatsyah Rivali, Aetna's Nominee

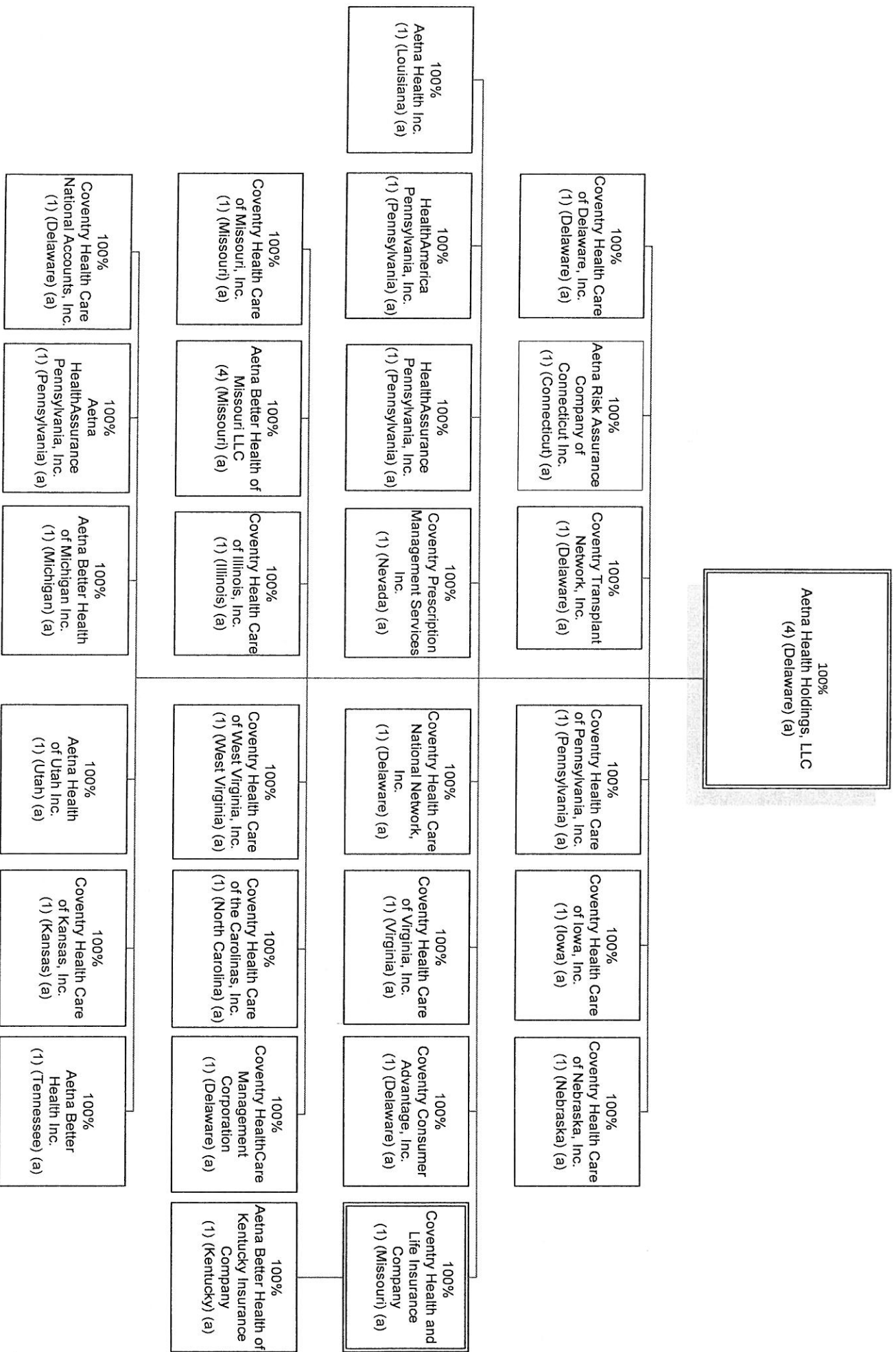
**51% owned by Euro Gulf LLC, Aetna's Nominee

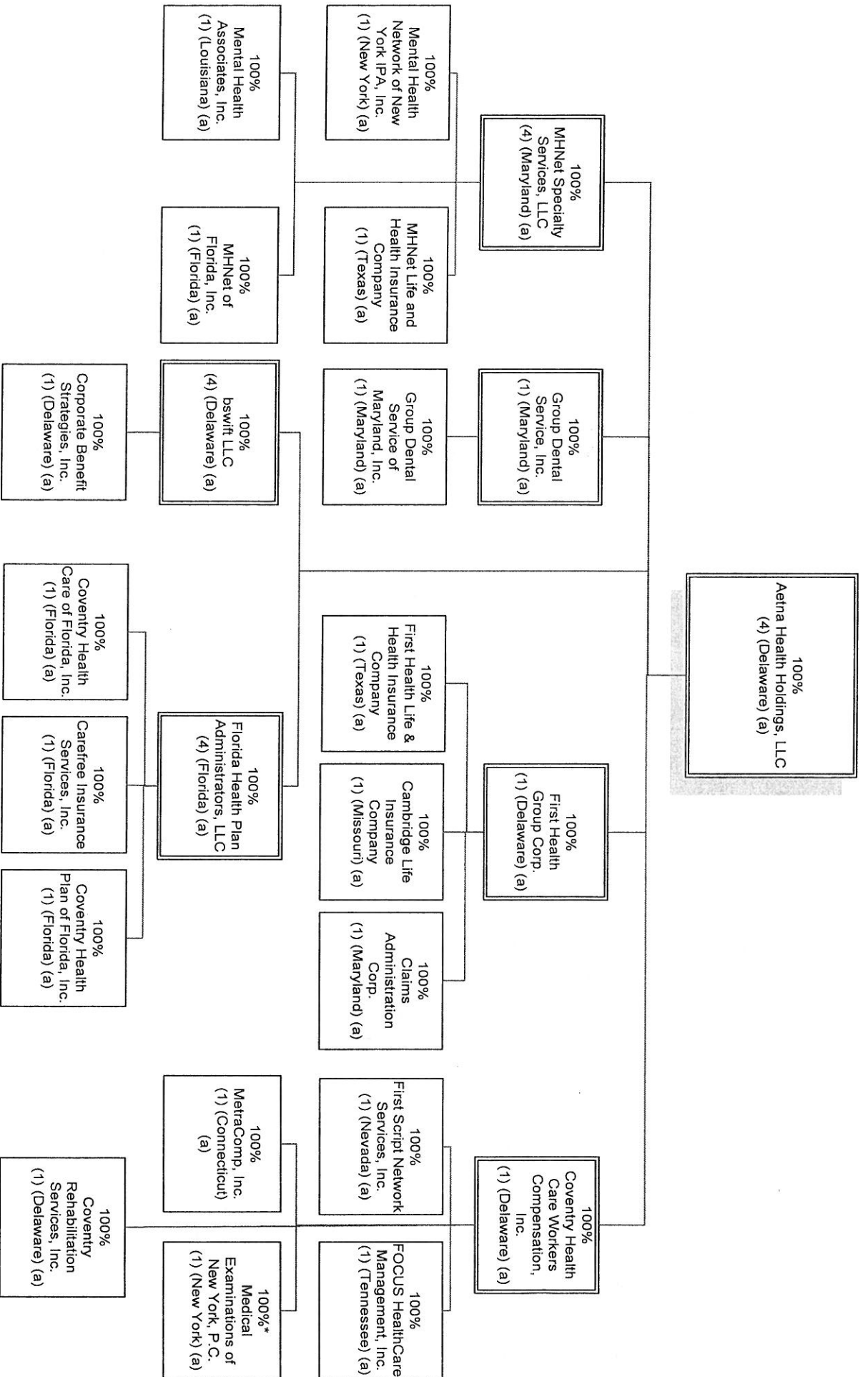
*** Aetna Global Benefits (Asia Pacific) owns 0.019857% of Indian Health Organisation Private Limited and Aetna Global Benefits (Singapore) owns 99.980143%



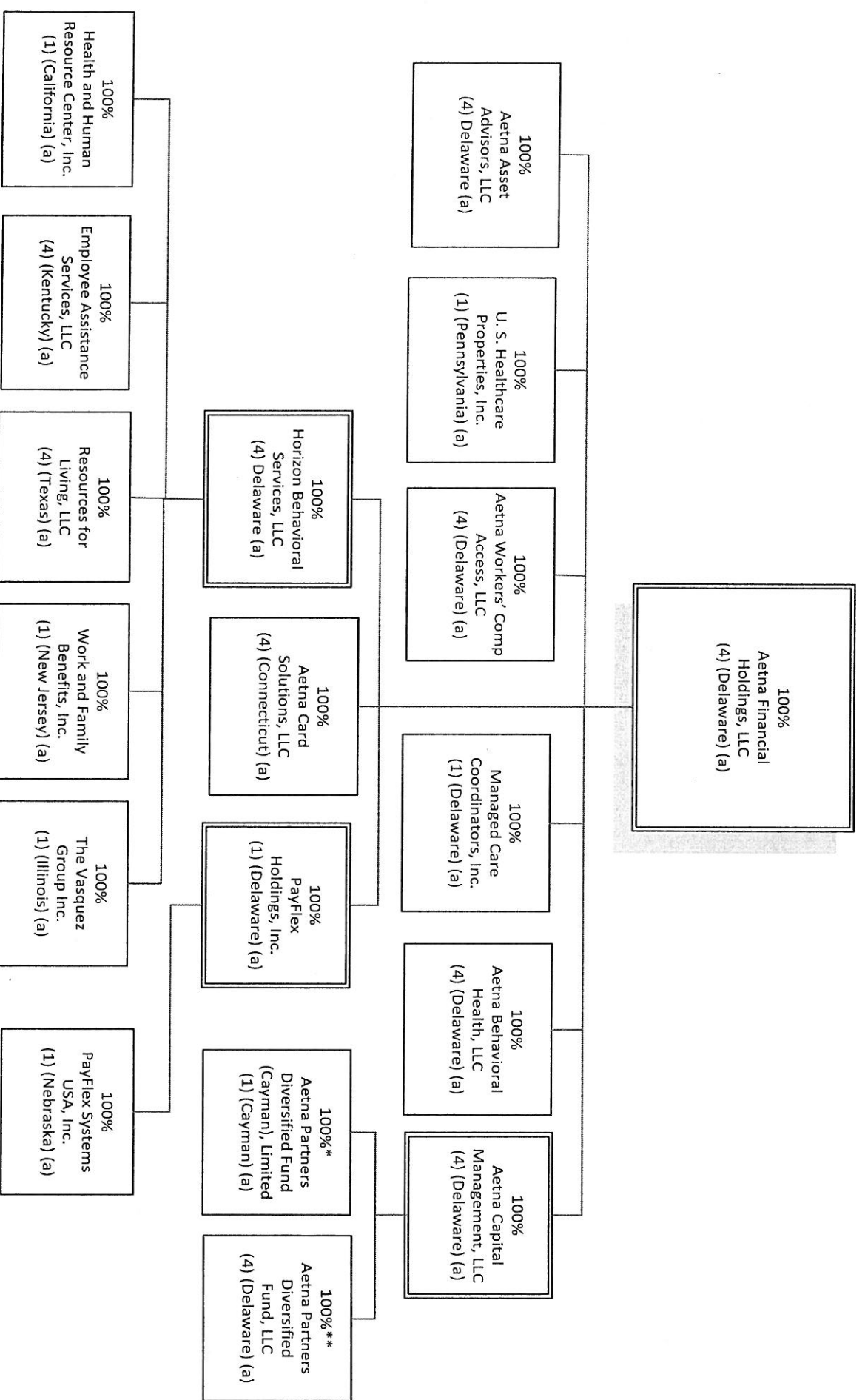
* Aetna ACO Holdings Inc. is owned by Aetna Life Insurance Company (302 shares); Aetna Health Inc. (PA) (198 shares); and Aetna Health Holdings, LLC (1 share).

** Innovation Health Holdings, LLC is 50% owned by Aetna ACO Holdings Inc. and 50% owned by Inova Health System Foundation

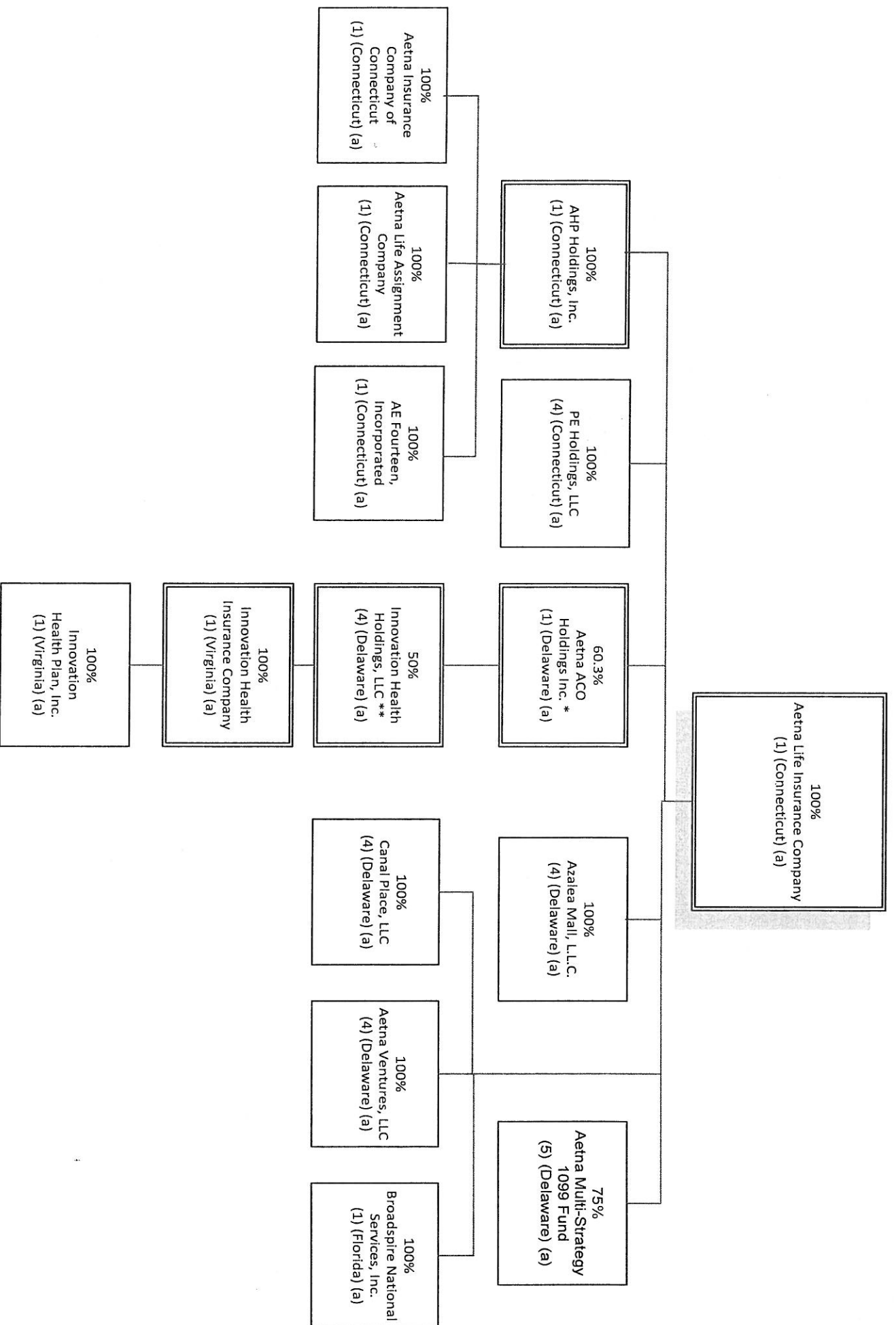




*100% owned through Aetna's Nominees



* Aetna Life Insurance Company owns the Class C participating shares of Aetna Partners Diversified Fund (Cayman), Limited.
 ** Aetna Life Insurance Company and Aetna Health and Life Insurance Company own substantially all of the non-managing member interests of Aetna Partners Diversified Fund, LLC.



* Aetna ACO Holdings Inc. is owned by Aetna Life Insurance Company (302 shares); Aetna Health Inc. (PA) (198 shares); and Aetna Health Holdings, LLC (1 share).
 ** Innovation Health Holdings, LLC is 50% owned by Aetna ACO Holdings Inc. and 50% owned by Inova Health System Foundation

