

**BEFORE THE INSURANCE DEPARTMENT  
OF THE  
COMMONWEALTH OF PENNSYLVANIA**

**Statement Regarding the Acquisition of Control of or Merger with  
Domestic Insurers:**

**Hospital Service Association of Northeastern Pennsylvania  
d/b/a Blue Cross of Northeastern Pennsylvania;  
First Priority Life Insurance Company, Inc.;  
HMO of Northeastern Pennsylvania, Inc.,  
d/b/a First Priority Health**

**By Highmark Inc.**

**BCNEPA RESPONSE TO INFORMATION REQUEST 6.1.1.13 FROM  
THE PENNSYLVANIA INSURANCE DEPARTMENT**

**REQUEST 6.1.1.13:**

**For (i) the Applicant; (ii) BCNEPA; and (iii) each BCNEPA Affiliate provide copies  
of: Provide detailed legal entity organizational charts for BCNEPA.**

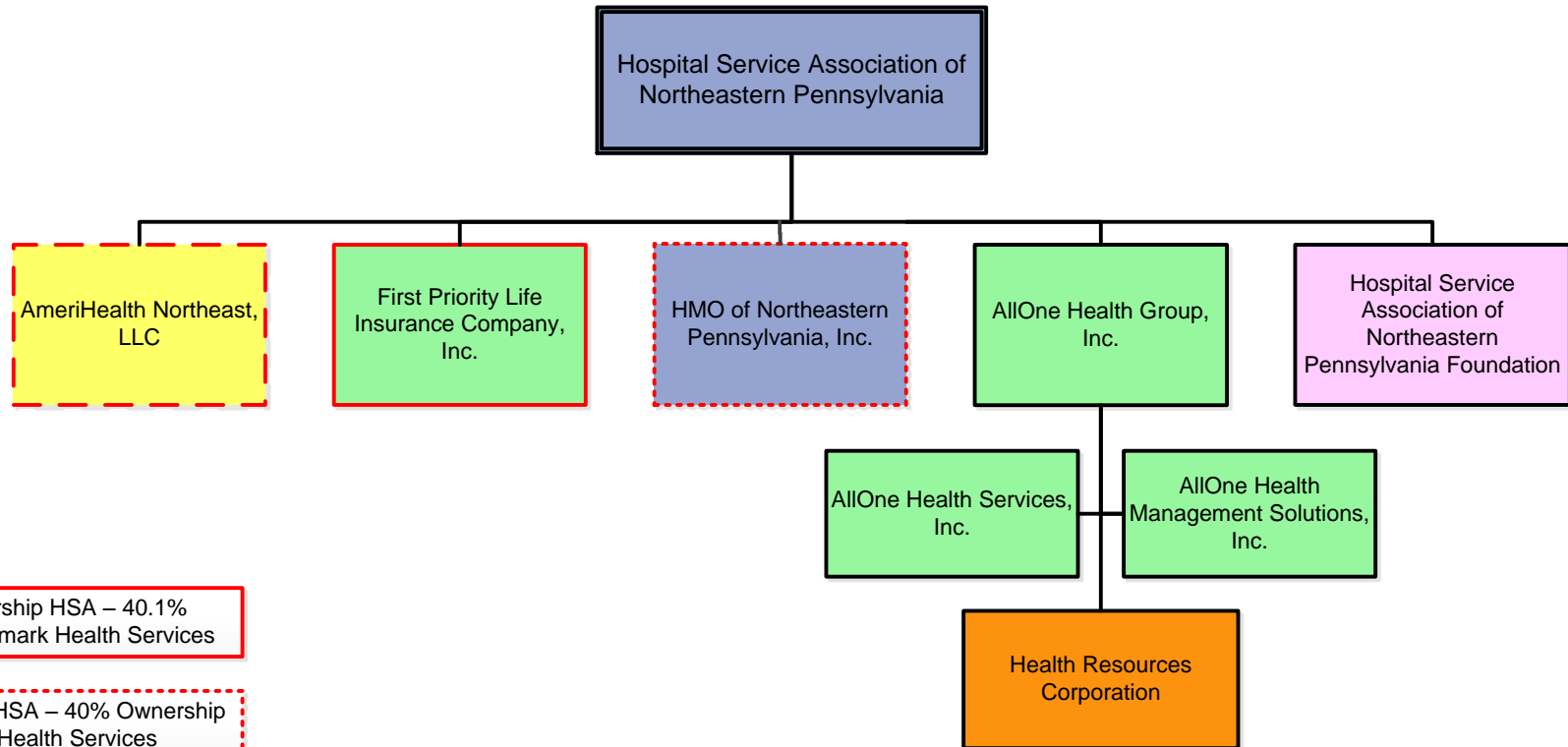
**RESPONSE:**

BCNEPA certifies to the best of its information, knowledge and belief that attached is a  
copy of a legal entity organizational chart for BCNEPA.

**Hospital Service Association of  
Northeastern Pennsylvania  
d/b/a Blue Cross of Northeastern  
Pennsylvania ("BCNEPA")  
19 North Main Street  
Wilkes-Barre, PA 18711**

# Hospital Service Association of Northeastern Pennsylvania

## Legal Entity Organizational Chart



59.9% Ownership HSA – 40.1%  
Ownership Highmark Health Services

60% Ownership HSA – 40% Ownership  
Highmark Health Services

50% Ownership HSA – 50% Ownership  
AmeriHealth Mercy Health Plan

|  |
|--|
| Pennsylvania Not-For-Profit                |
| Pennsylvania For-Profit                    |
| Pennsylvania Not-For-Profit 501(c)(3)      |
| Pennsylvania Limited Liability Corporation |
| Massachusetts For-Profit                   |