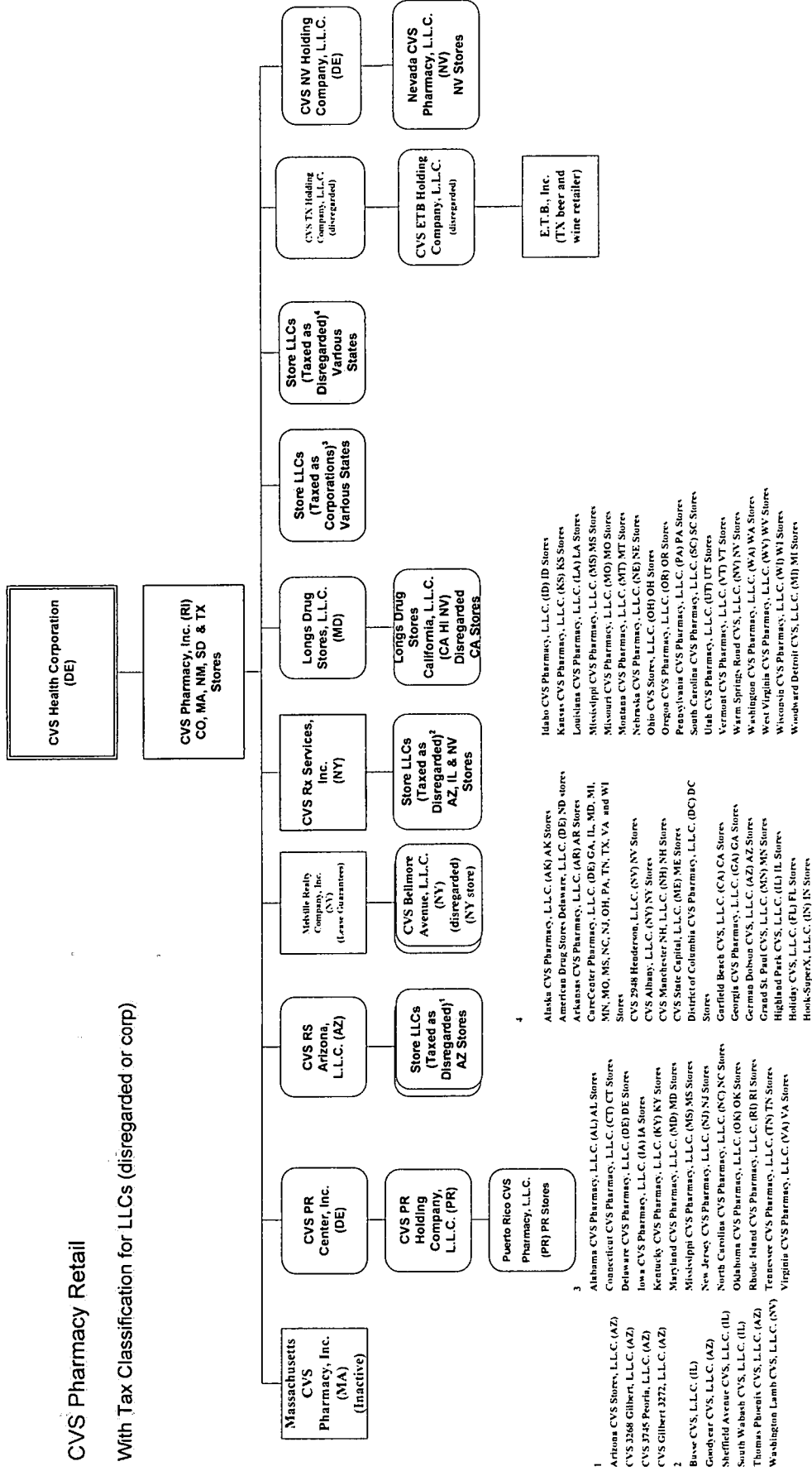
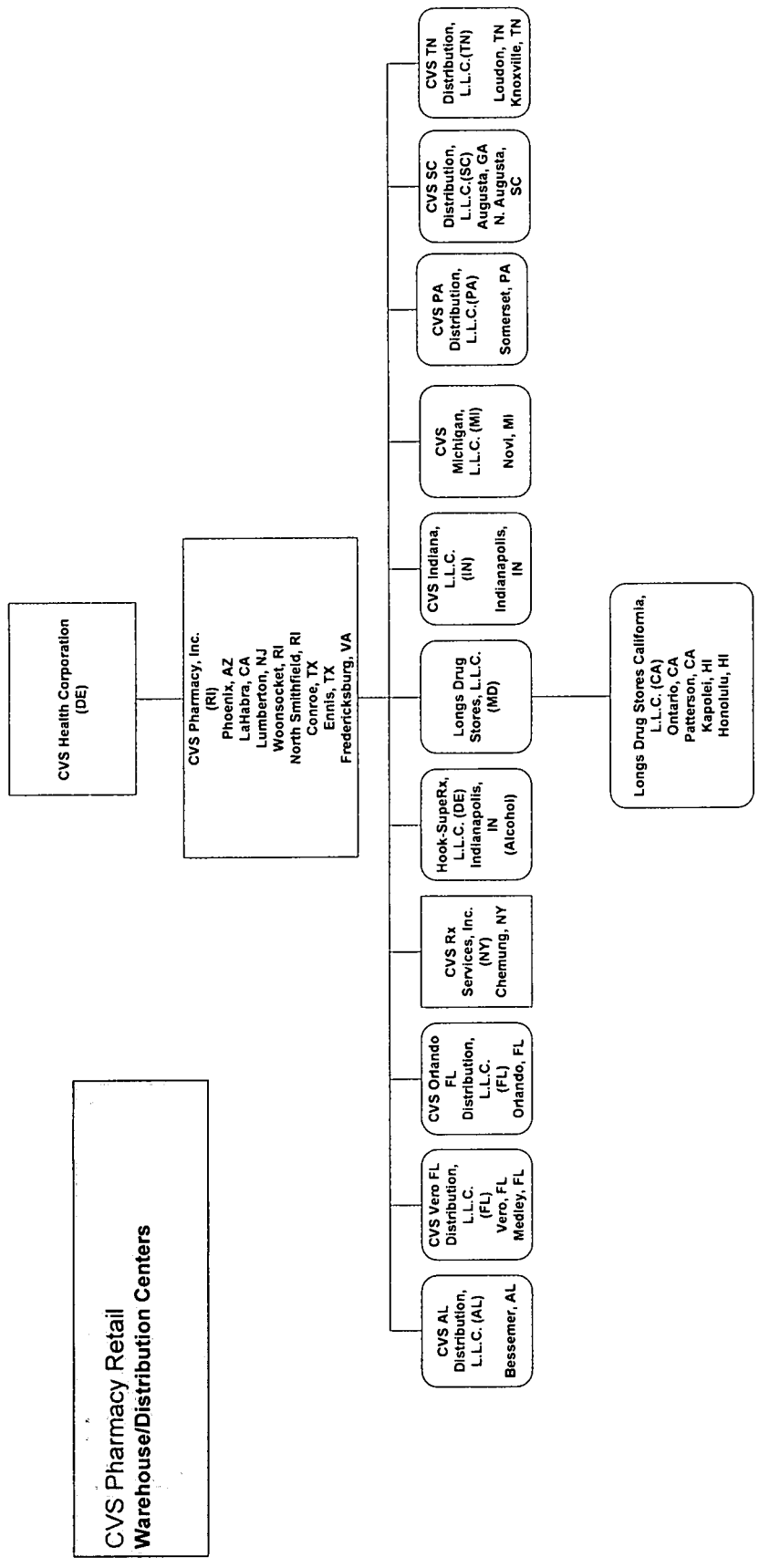


Exhibit 3-A
Current organizational chart of CVS
Health and its affiliates

CVS Pharmacy Retail

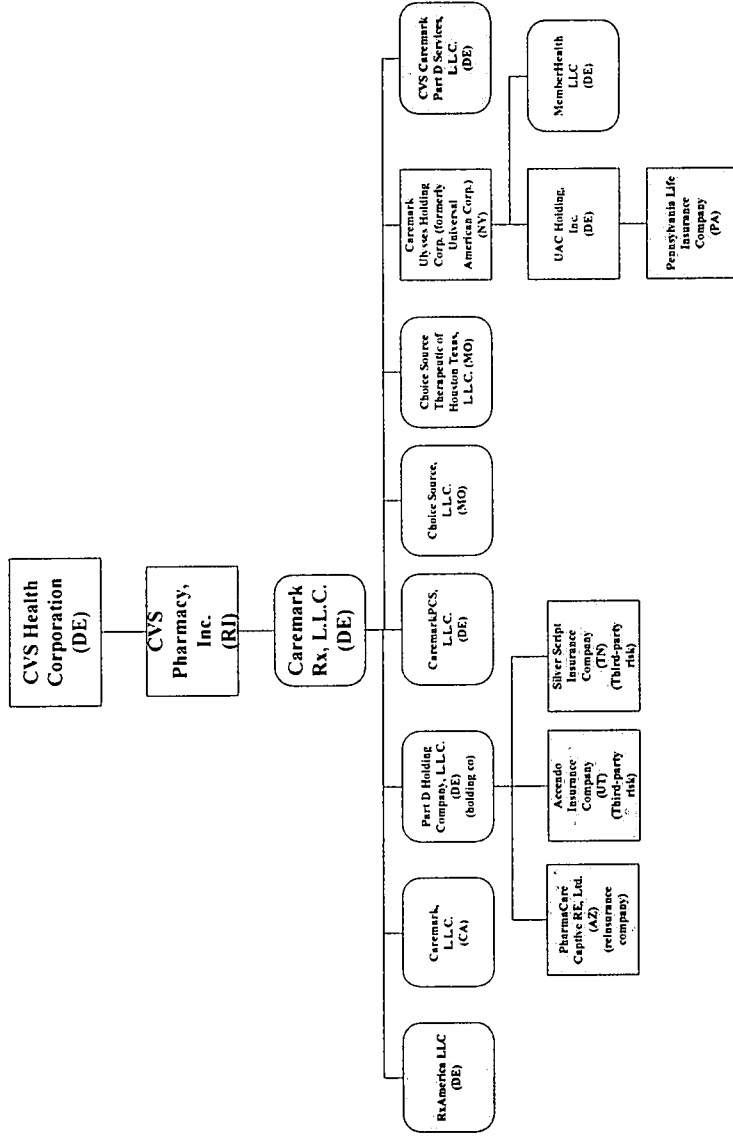
With Tax Classification for LLCs (disregarded or corp)



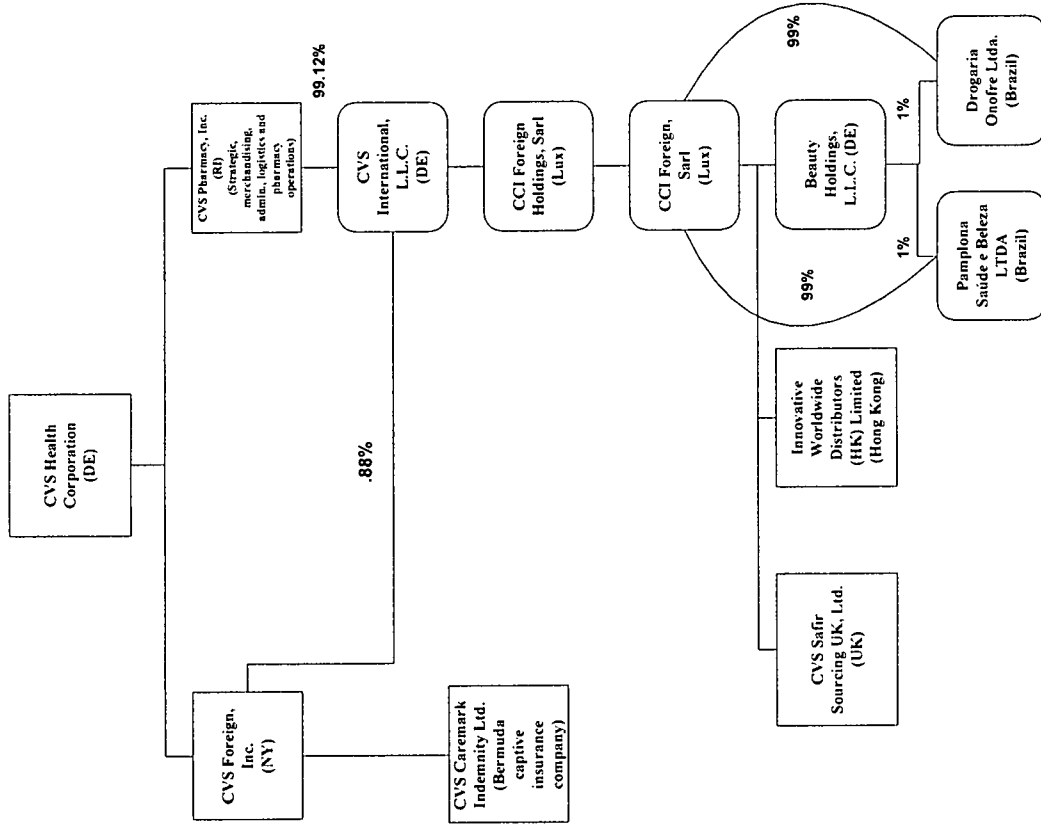


**CVS Caremark
MEDICARE PART D**

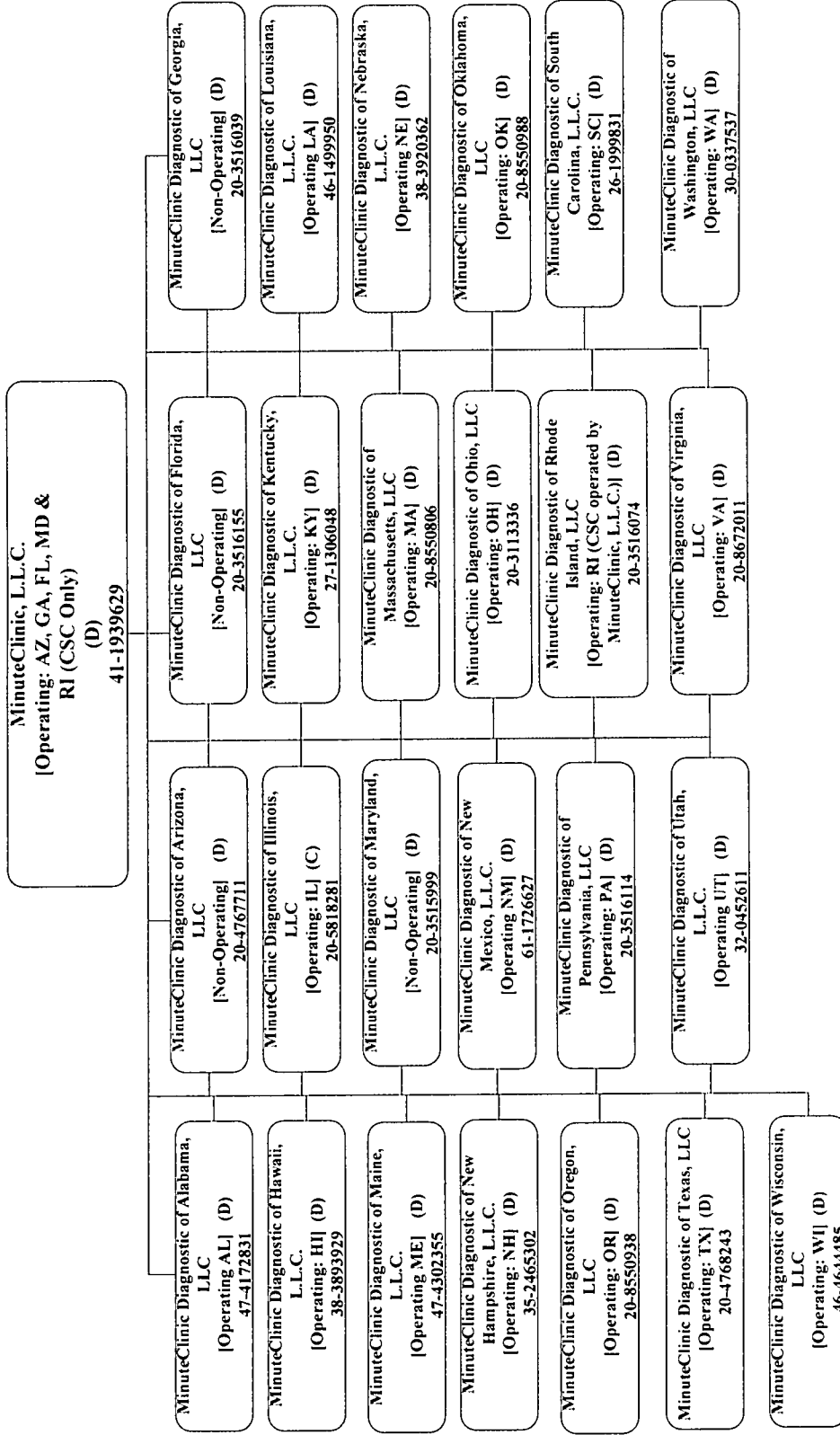
Active Med D Companies Highlighted



CVS Health International Structure



MINUTECLINIC, L.L.C. AND ITS SUBSIDIARIES



**MINUTECLINIC
PRACTITIONER-OWNED ENTITIES**

MinuteClinic Diagnostic Medical Group of California, Inc.
[Operating: Los Angeles, CA]
(C)
42-1731802

MinuteClinic Diagnostic Medical Group of Orange County, Inc.
[Operating: Orange County, CA]
(C)
26-0844287

MinuteClinic Diagnostic of San Diego, Inc.
[Operating: San Diego, CA]
(C)
26-0844323

MC Diagnostic of Connecticut, P.C.
[Operating: CT]
(C)
20-5414393

Eric C. Marshall, M.D., P.C. d/b/a MinuteClinic Diagnostic of the District of Columbia
[Operating: DC]
(C)
20-8550517

MinuteClinic Diagnostics of Indiana, LLC
[Operating: IN]
(C)
20-3207688

MinuteClinic Diagnostic of Kansas, P.A.
[Operating: KS&MO*]
(C)
*Operates in MO under the name MinuteClinic Diagnostic of Kansas, P.C.
20-5096637

MinuteClinic Diagnostic of Michigan, P.C.
[Operating: MI]
(C)
20-4269269

MinuteClinic Diagnostic, P.A.
[Operating: MN]
(C)
41-1952112

MinuteClinic Diagnostic of New Jersey, LLC
[Operating: NJ]
(C)
20-4868967

George Safran, M.D., P.C.
(formerly Kimberly J. Henderson, M.D., P.C.)
[Operating: NY: Effective 3/28/10]
(C)
27-1511452

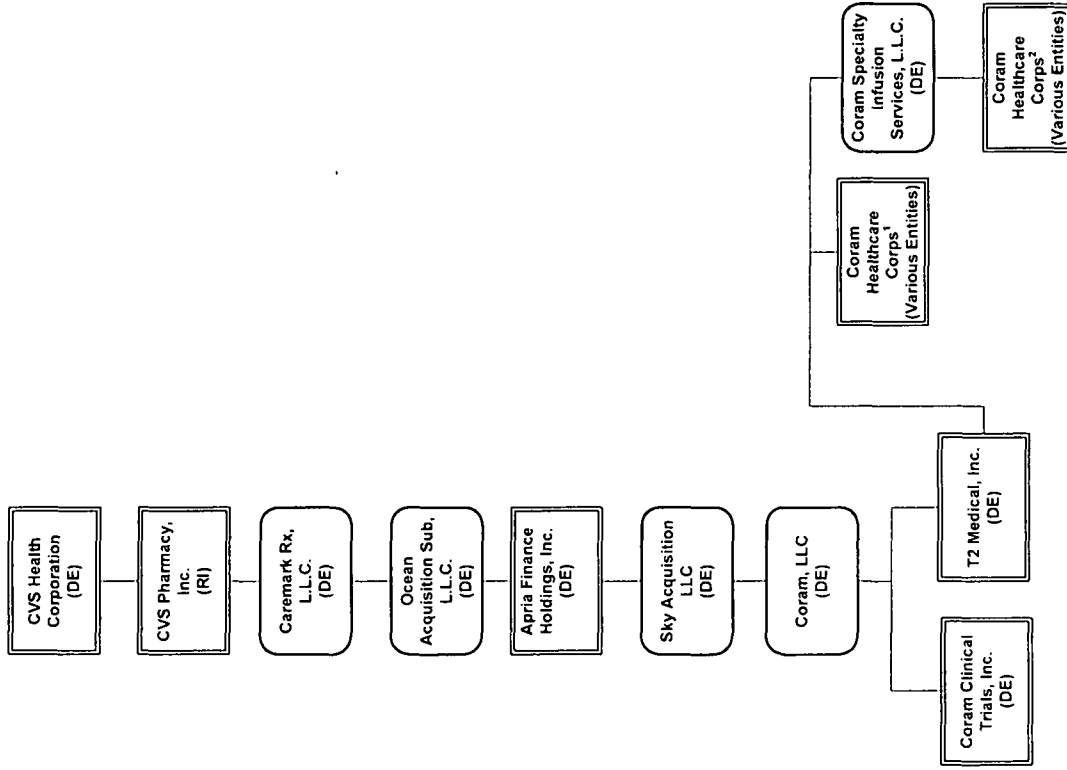
Parekh MinuteClinic of Nevada, P.C.*
[Operating: NV]
(C)
*Operates under the d/b/a/ MinuteClinic Diagnostic of Nevada
20-5793559

MinuteClinic Diagnostic of North Carolina, P.C.
[Operating: NC]
(C)
20-3555819

MinuteClinic Diagnostic of Tennessee, P.C.
[Operating: TN]
(C)
20-3348922

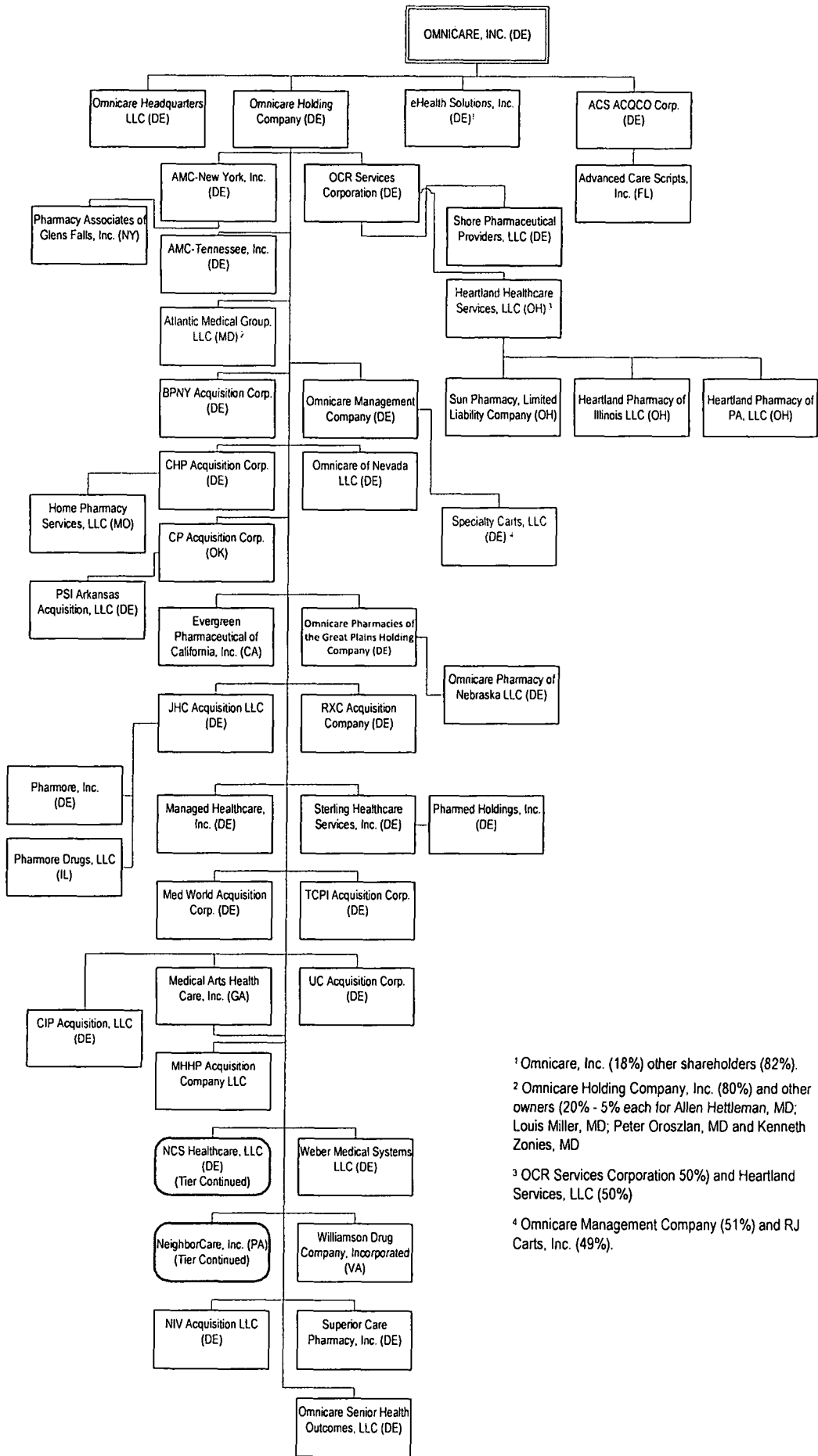
MinuteClinic Diagnostic of Minnesota, P.A.
[Operating: MN]
(C)
47-5140770

**Coram
CVS Specialty**



¹ Coram Healthcare Corporation of Alabama
 Coram Healthcare Corporation of Indiana
 Coram Healthcare Corporation of Mississippi
 Coram Healthcare Corporation of Southern California
 Coram Healthcare Corporation of Florida
 Coram Healthcare Corporation of Greater D.C. York
 Coram Healthcare Corporation of Nevada
 Coram Healthcare Corporation of Northern California
 Coram Healthcare Corporation of Southern Florida

² CoramRx, LLC
 Coram Healthcare Corporation of North Texas
 Coram Healthcare Corporation of Utah
 Coram Alternate Site Services, Inc.
 Coram Healthcare Corporation of Massachusetts
 Coram Healthcare/Carolina Home Therapeutics, LLC (51%)



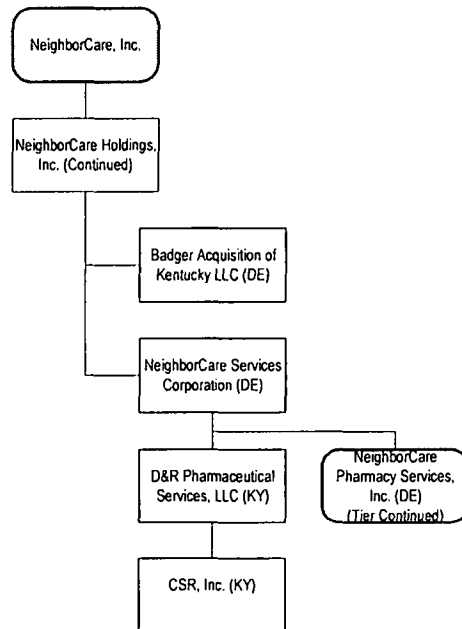
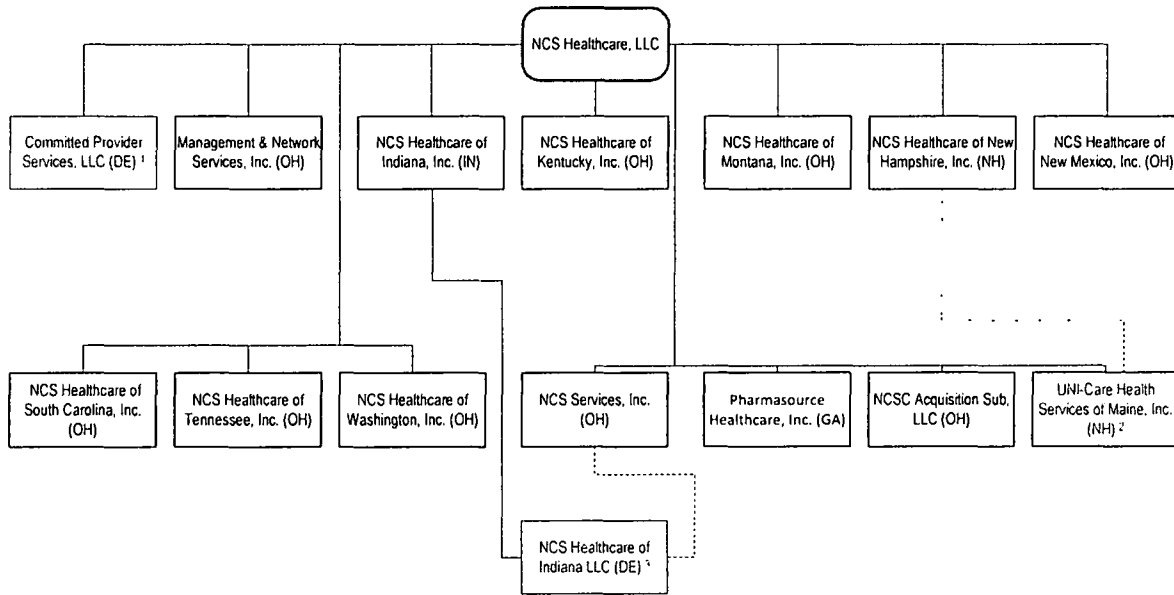
¹ Omnicare, Inc. (18%) other shareholders (82%).

² Omnicare Holding Company, Inc. (80%) and other owners (20% - 5% each for Allen Hettleman, MD; Louis Miller, MD; Peter Oroszlan, MD and Kenneth Zonies, MD)

³ OCR Services Corporation (50%) and Heartland Services, LLC (50%)

⁴ Omnicare Management Company (51%) and RJ Carts, Inc. (49%).

Company breakdown continued...

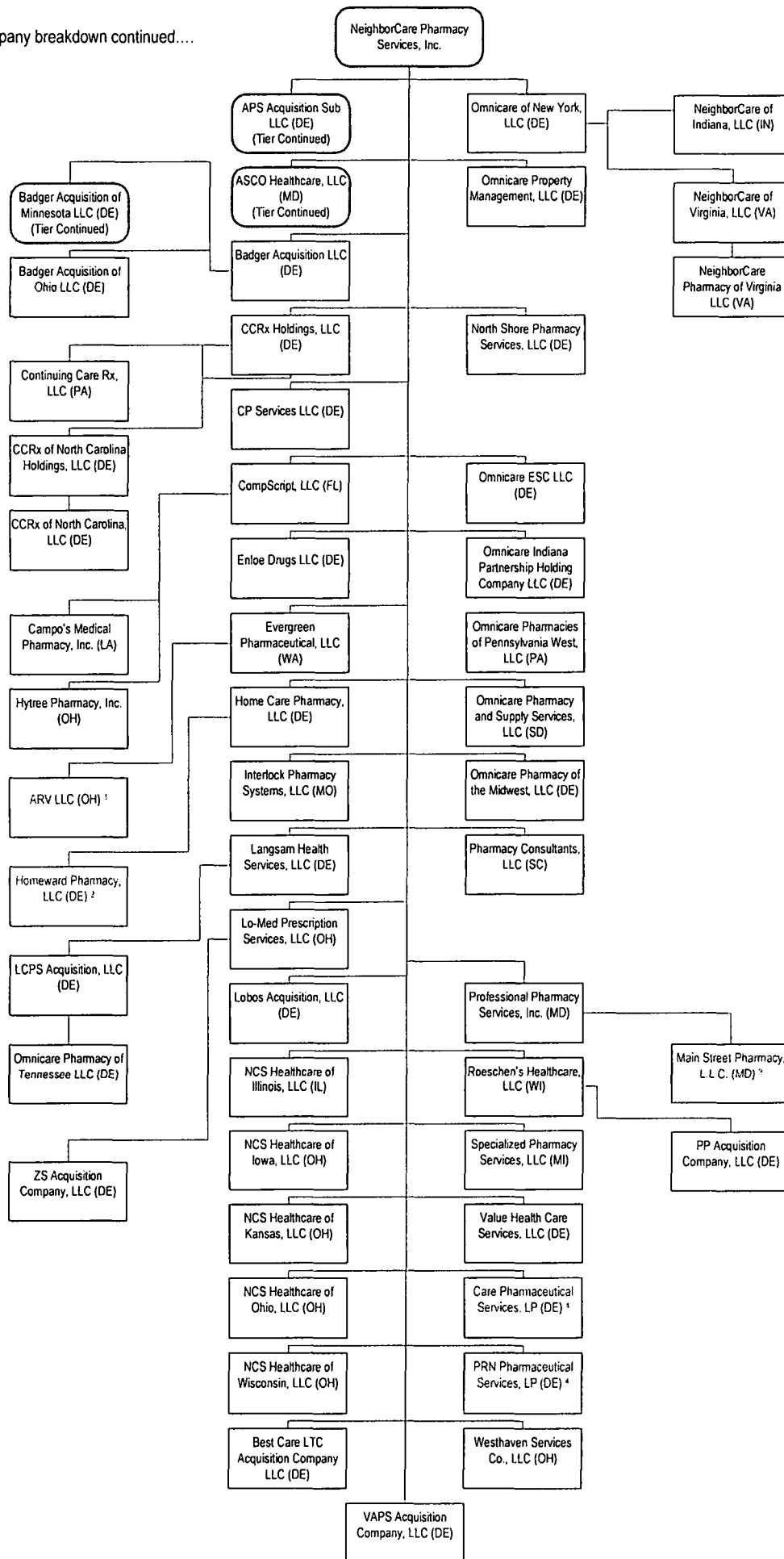


¹ NCS Healthcare, LLC (10%) and Bergen Brunswick (80%).

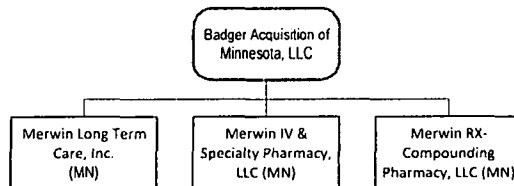
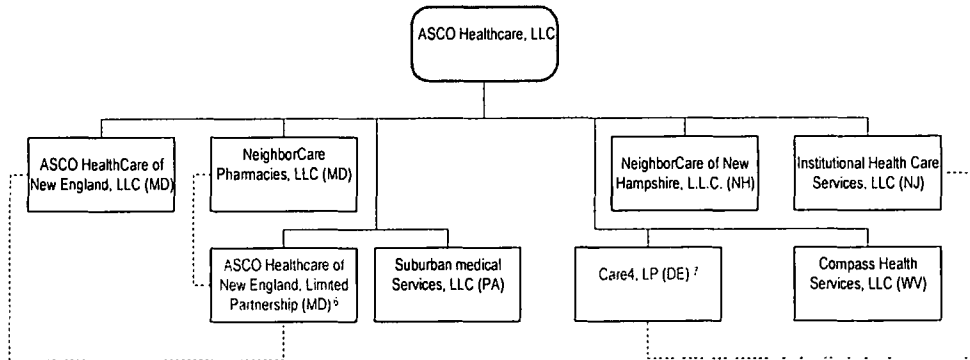
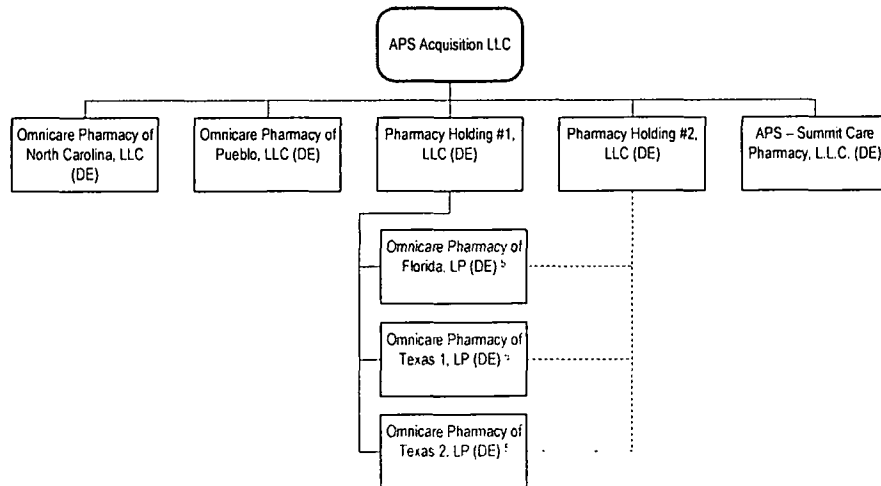
² NCS Healthcare, LLC (13%) and NCS Healthcare of New Hampshire, Inc. (87%).

³ NCS Services, Inc. (1%) and NCS HealthCare of Indiana, Inc. (99%)

Company breakdown continued....



Company breakdown continued....



¹ Evergreen Pharmaceutical, LLC owns (50%) and ARV Assisted Living, Inc. (50%).

² Home Care Pharmacy, LLC (50%) other owner (50%).

³ Professional Pharmacy Services, Inc. (99%) and NeighborCare Pharmacies, LLC (1%).

⁴ NeighborCare Pharmacy Services, Inc. (99%) and Omnicare Indiana Partnership Holding Company LLC (1%).

⁵ Pharmacy Holding #1, LLC (99%) and Pharmacy Holding #2, LLC (1%).

⁶ ASCO HealthCare, LLC (54.5%), NeighborCare Pharmacies, LLC (44.5%) and ASCO Healthcare of New England, LLC (1%)

⁷ ASCO HealthCare, LLC (99.5%) and Institutional Health Care Services, LLC (.05%).