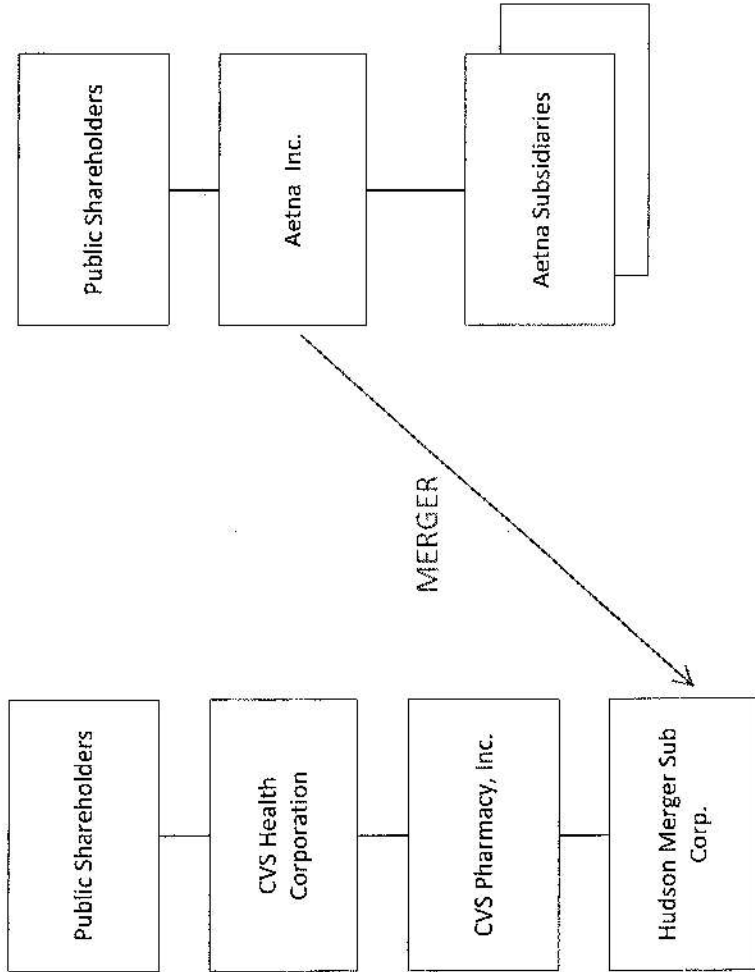


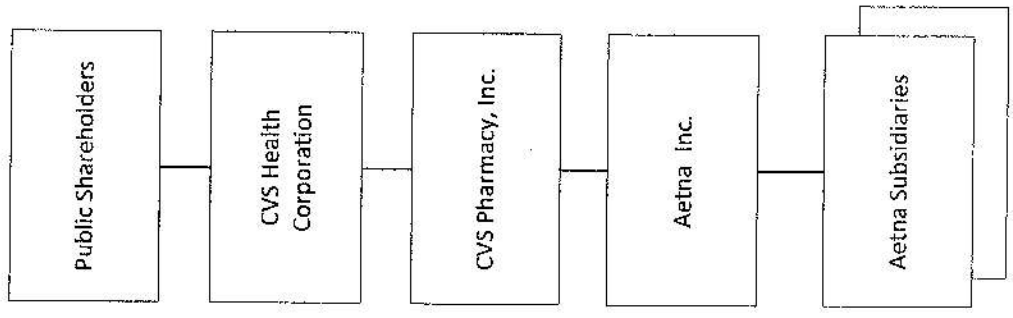
Exhibit 3-C

**Pro Forma Organizational Chart of
CVS Health and its Affiliates
Following the Transaction**

**Corporate Structure Chart
BEFORE**

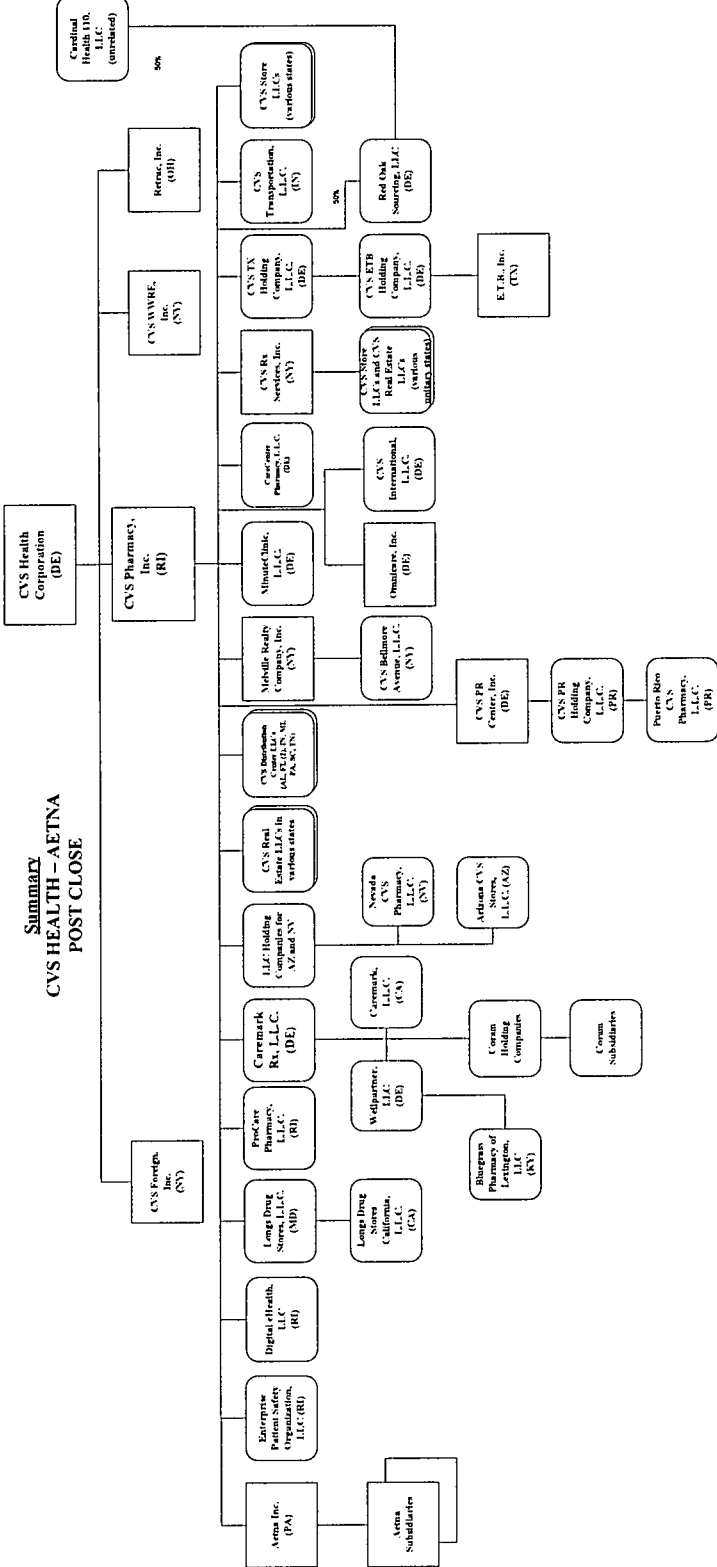


**Corporate Structure Chart
AFTER**



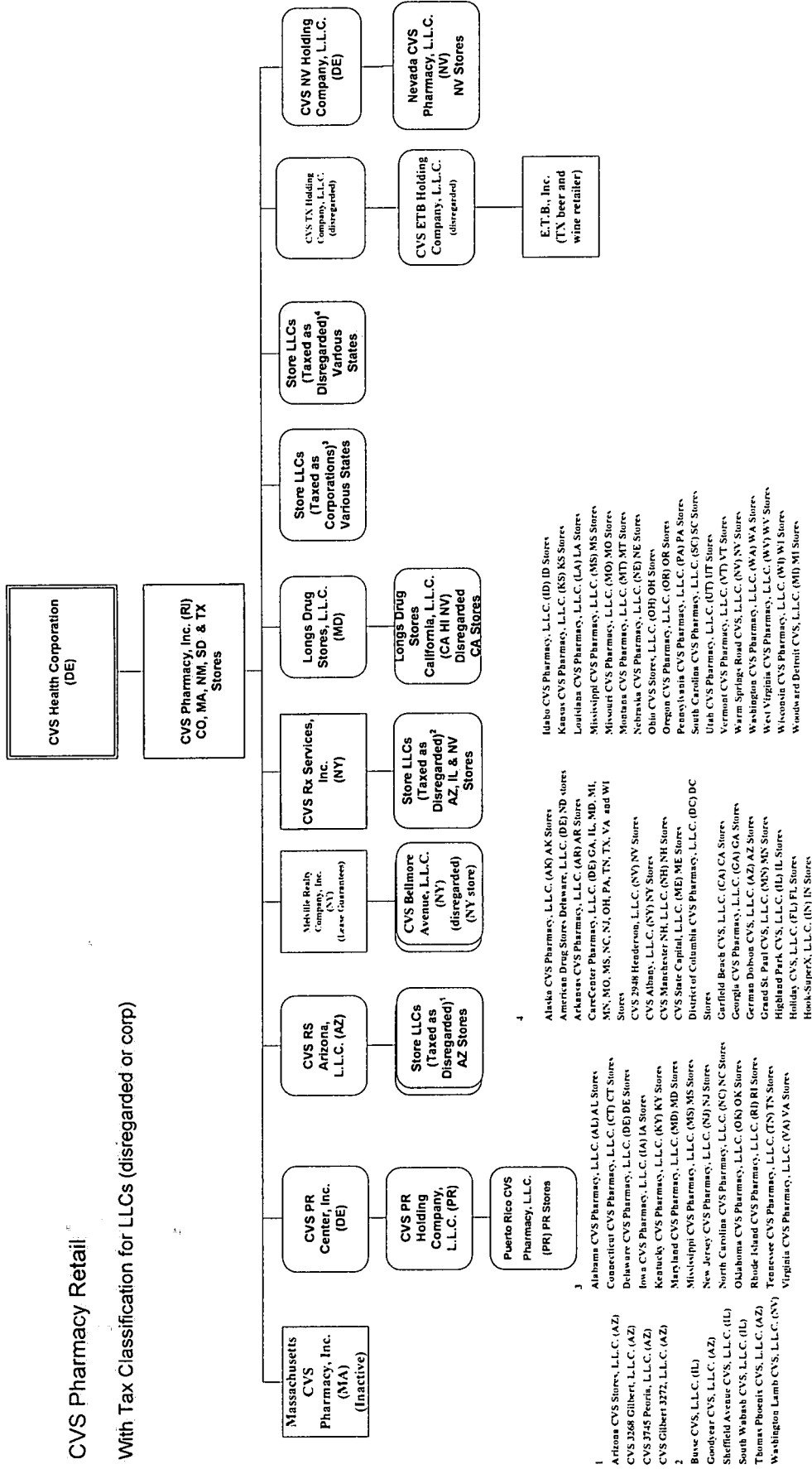


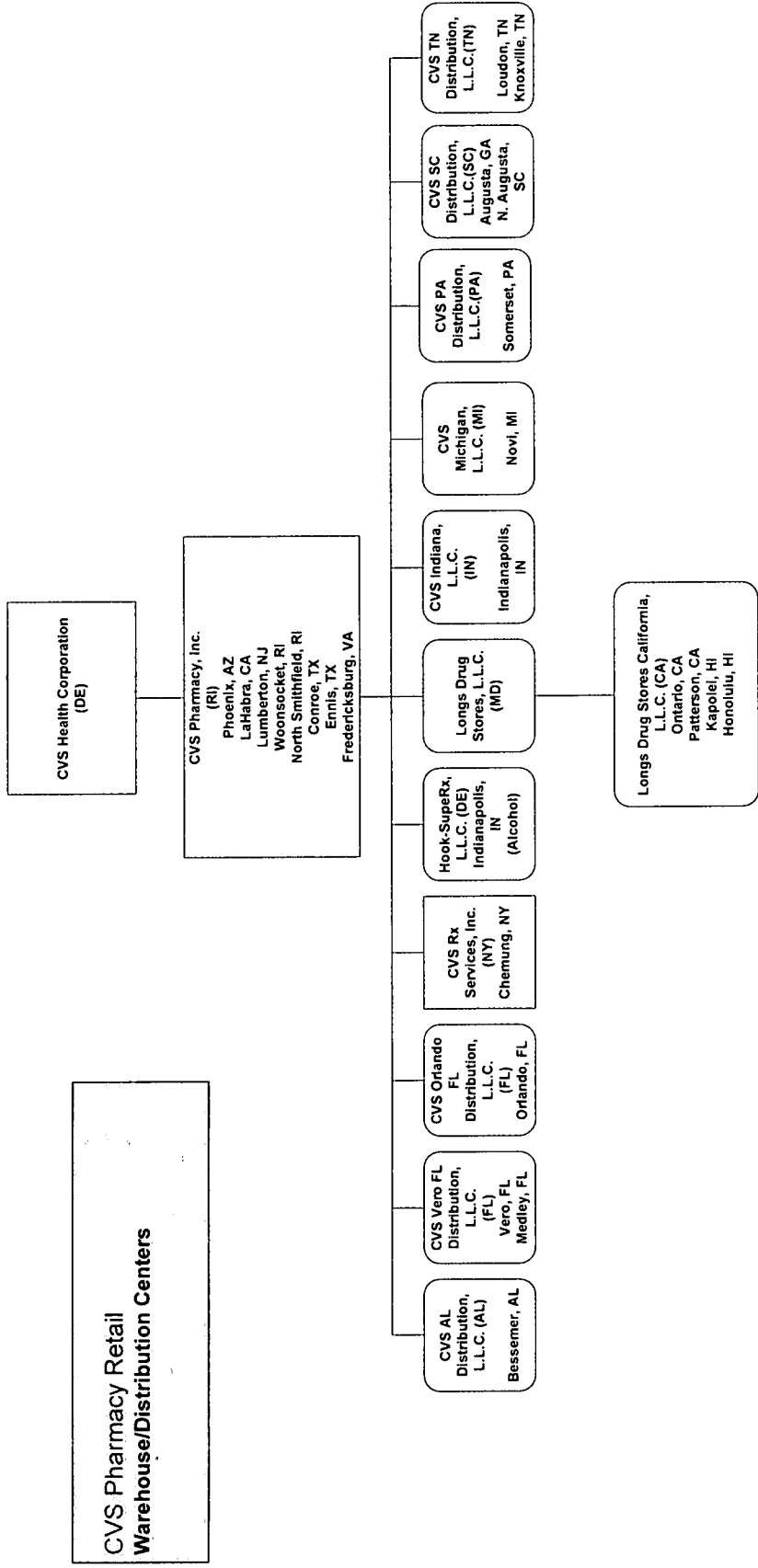
**Summary
CVS HEALTH – AETNA
POST CLOSE**



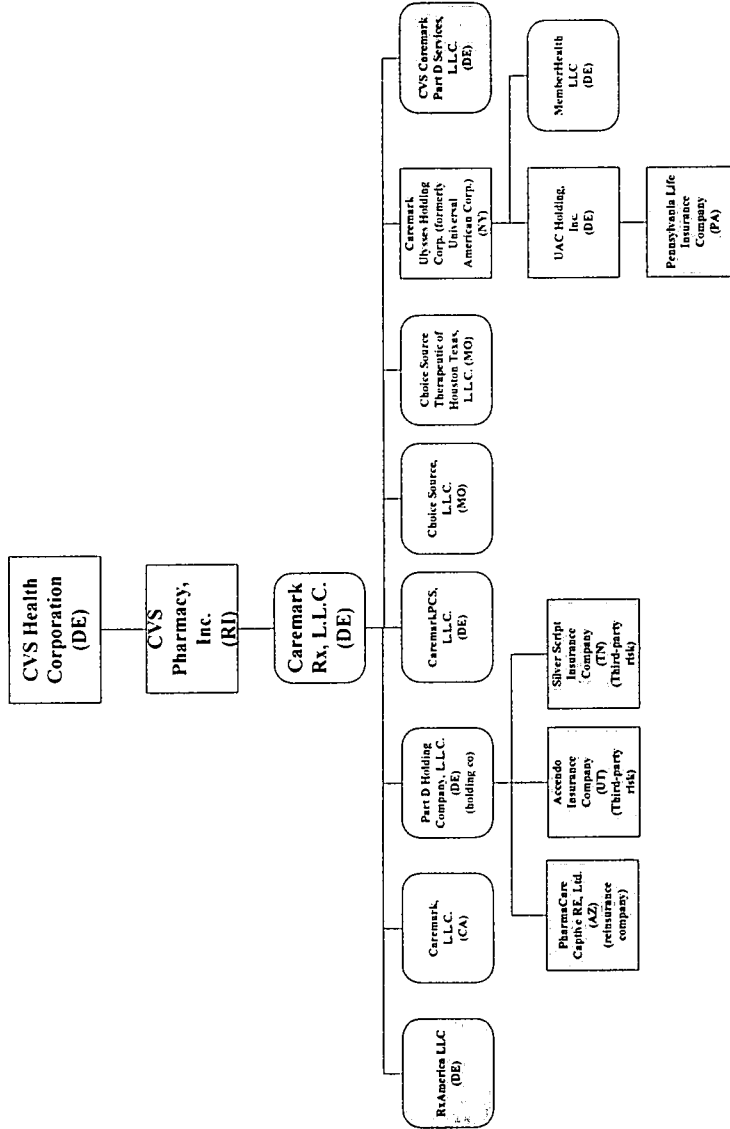
CVS Pharmacy Retail

With Tax Classification for LLCs (disregarded or corp)

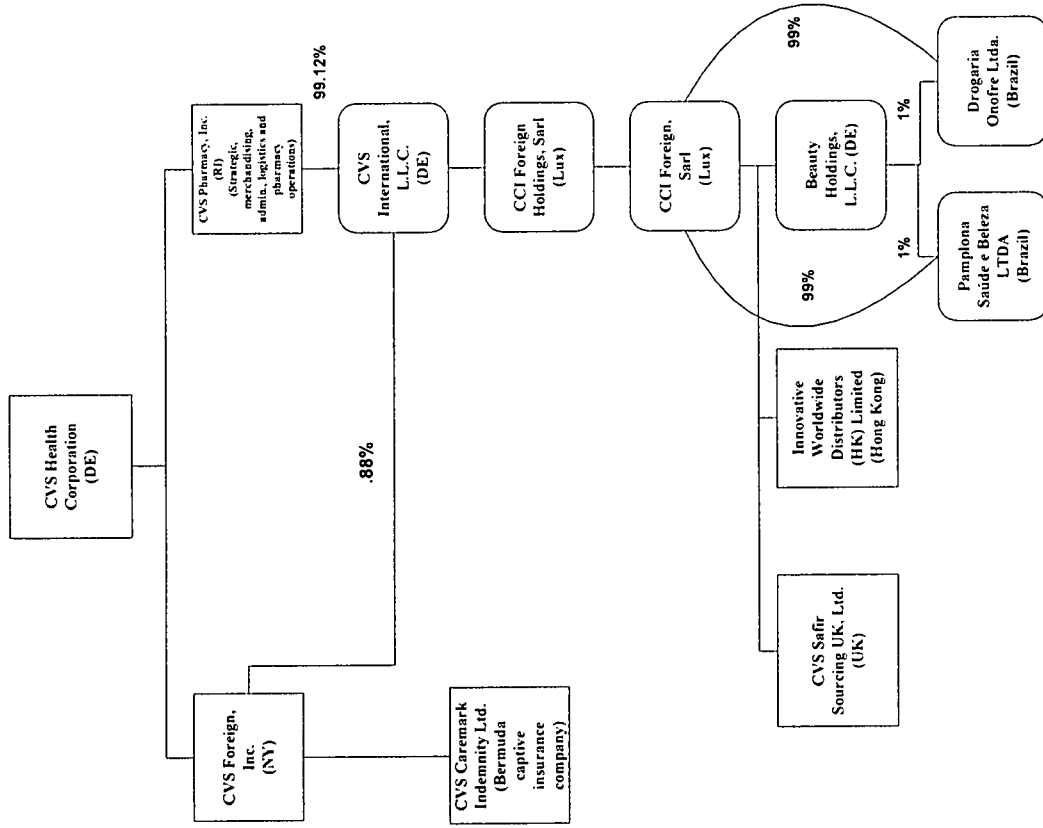




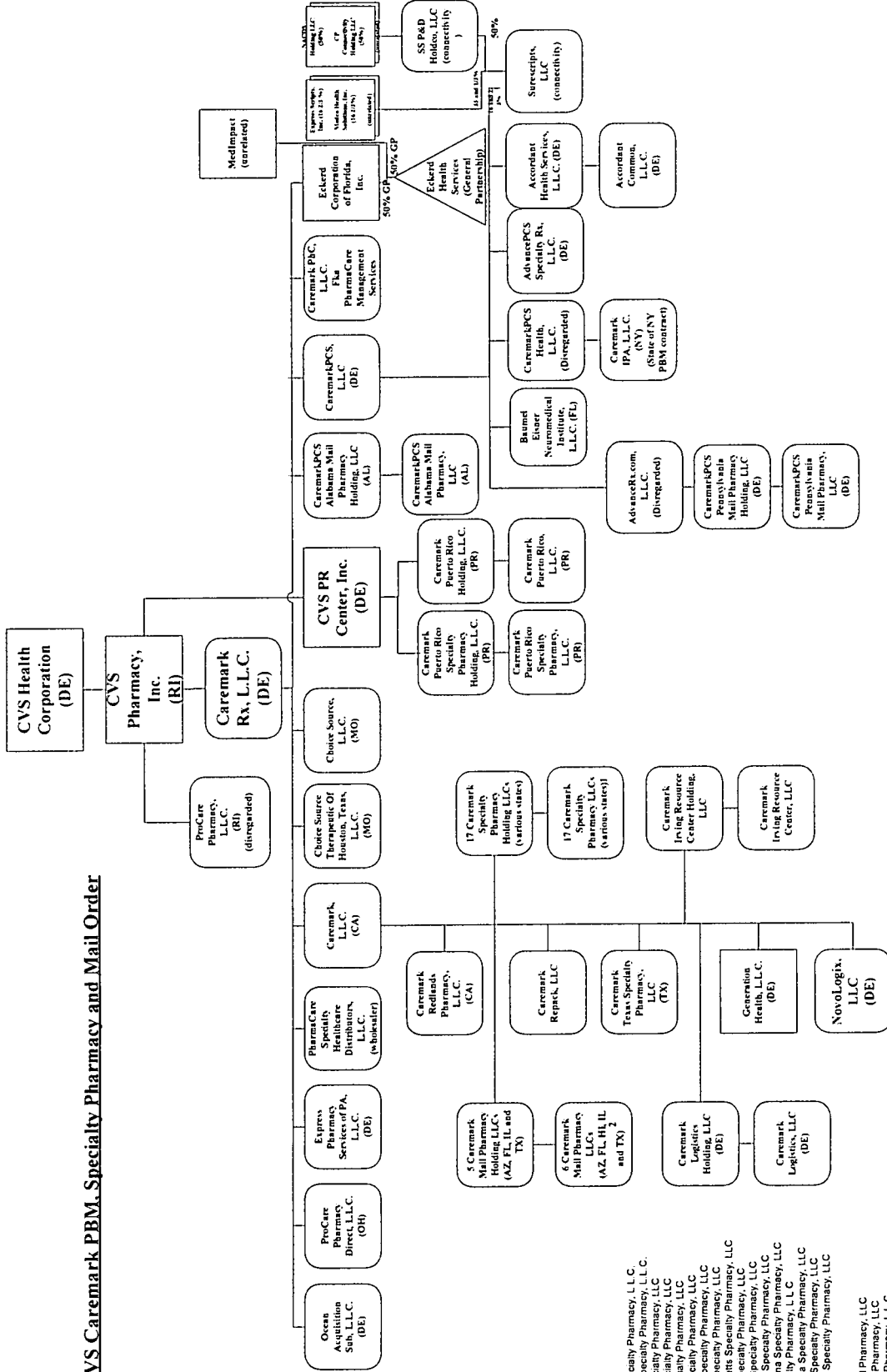
CVS Caremark
MEDICARE PART D
 Active Med D Companies Highlighted



CVS Health International Structure



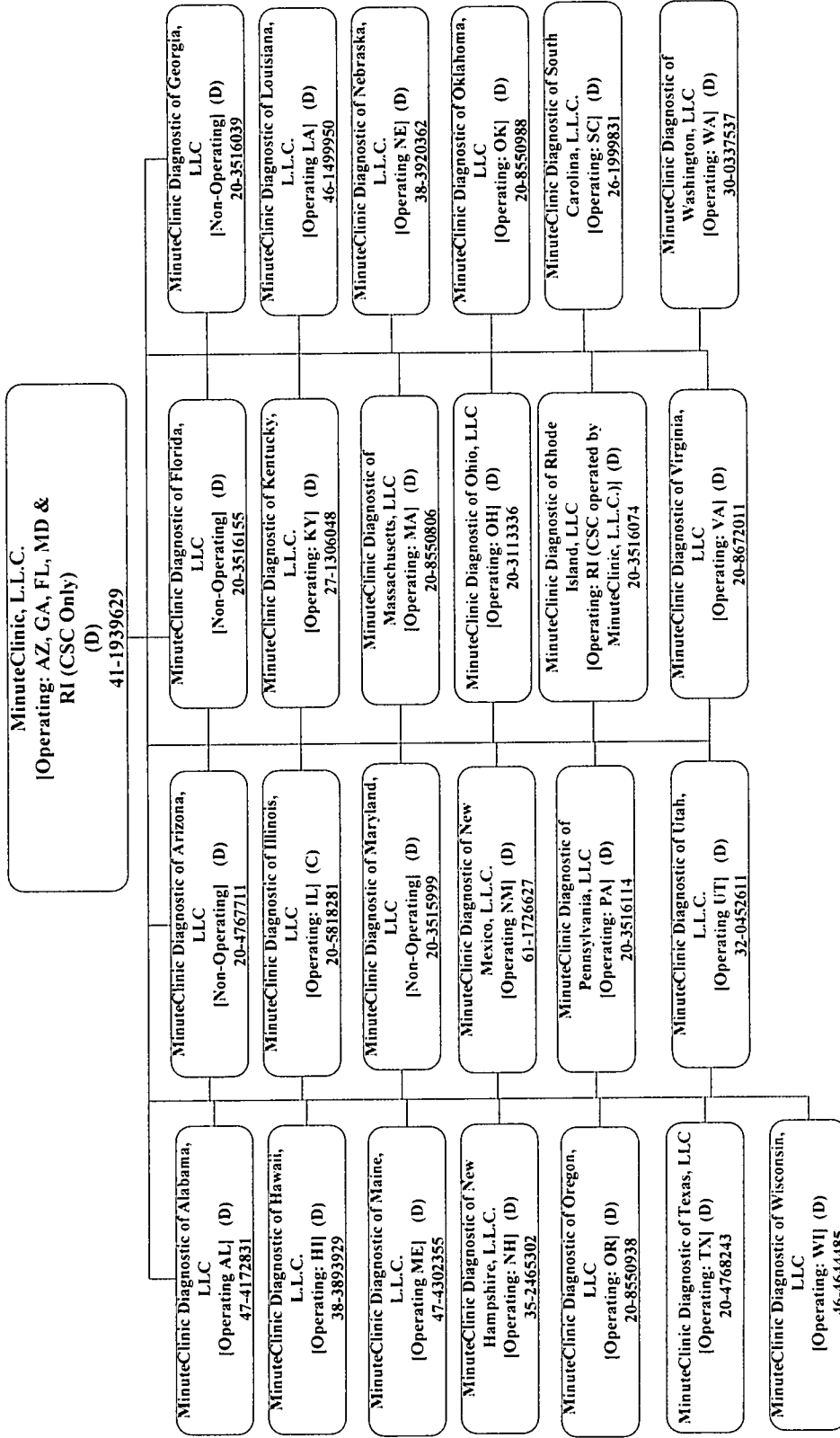
CVS Caremark PBM, Specialty Pharmacy and Mail Order



Specialty Mail
 Caremark Arizona Specialty Pharmacy, L.L.C.
 Caremark California Specialty Pharmacy, L.L.C.
 Caremark Florida Specialty Pharmacy, L.L.C.
 Caremark Hawaii Specialty Pharmacy, L.L.C.
 Caremark Illinois Specialty Pharmacy, L.L.C.
 Caremark Kansas Specialty Pharmacy, L.L.C.
 Caremark Maryland Specialty Pharmacy, L.L.C.
 Caremark Massachusetts Specialty Pharmacy, L.L.C.
 Caremark Michigan Specialty Pharmacy, L.L.C.
 Caremark Minnesota Specialty Pharmacy, L.L.C.
 Caremark New Jersey Specialty Pharmacy, L.L.C.
 Caremark North Carolina Specialty Pharmacy, L.L.C.
 Caremark Ohio Specialty Pharmacy, L.L.C.
 Caremark Pennsylvania Specialty Pharmacy, L.L.C.
 Caremark Tennessee Specialty Pharmacy, L.L.C.
 Caremark Washington Specialty Pharmacy, L.L.C.

Mail Order
 Caremark Arizona Mail Pharmacy, L.L.C.
 Caremark Florida Mail Pharmacy, L.L.C.
 Caremark Hawaii Mail Pharmacy, L.L.C.
 Caremark Illinois Mail Pharmacy, L.L.C.
 Caremark Texas Mail Pharmacy, L.L.C.
 CVS Caremark Advanced Technology Pharmacy, L.L.C.

MINUTECLINIC, L.L.C. AND ITS SUBSIDIARIES



**MINUTECLINIC
PRACTITIONER-OWNED ENTITIES**

MinuteClinic Diagnostic Medical Group of California, Inc.
[Operating: Los Angeles, CA]
(C)
42-1731802

MinuteClinic Diagnostic Medical Group of Orange County, Inc.
[Operating: Orange County, CA]
(C)
26-0844287

MinuteClinic Diagnostic of San Diego, Inc.
[Operating: San Diego, CA]
(C)
26-0844323

MC Diagnostic of Connecticut, P.C.
[Operating: CT]
(C)
20-5414393

Eric C. Marshall, M.D., P.C. d/b/a MinuteClinic Diagnostic of the District of Columbia
[Operating: DC]
(C)
20-8550517

MinuteClinic Diagnostics of Indiana, LLC
[Operating: IN]
(C)
20-3207688

MinuteClinic Diagnostic of Kansas, P.A..
[Operating: KS&MO*]
(C)
*Operates in MO under the name MinuteClinic Diagnostic of Kansas, P.C.
20-5096637

MinuteClinic Diagnostic of Michigan, P.C.
[Operating: MI]
(C)
20-4269269

MinuteClinic Diagnostic, P.A.
[Operating: MN]
(C)
41-1952112

MinuteClinic Diagnostic of New Jersey, LLC
[Operating: NJ]
(C)
20-4868967

George Safran, M.D., P.C.
(formerly Kimberly J. Henderson, M.D., P.C.)
[Operating: NY: Effective 3/28/10]
(C)
27-1511452

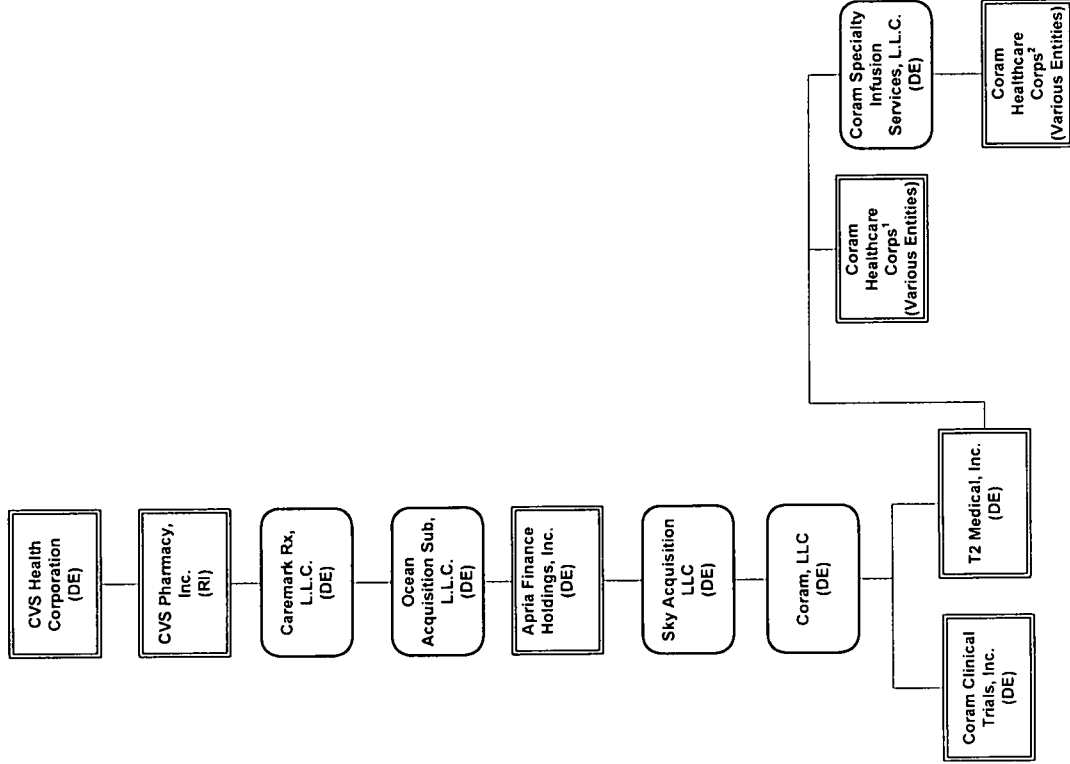
Parekh MinuteClinic of Nevada, P.C.*
[Operating: NV]
(C)
*Operates under the d/b/a/ MinuteClinic Diagnostic of Nevada
20-5793559

MinuteClinic Diagnostic of North Carolina, P.C.
[Operating: NC]
(C)
20-3555819

MinuteClinic Diagnostic of Tennessee, P.C.
[Operating: TN]
(C)
20-3348922

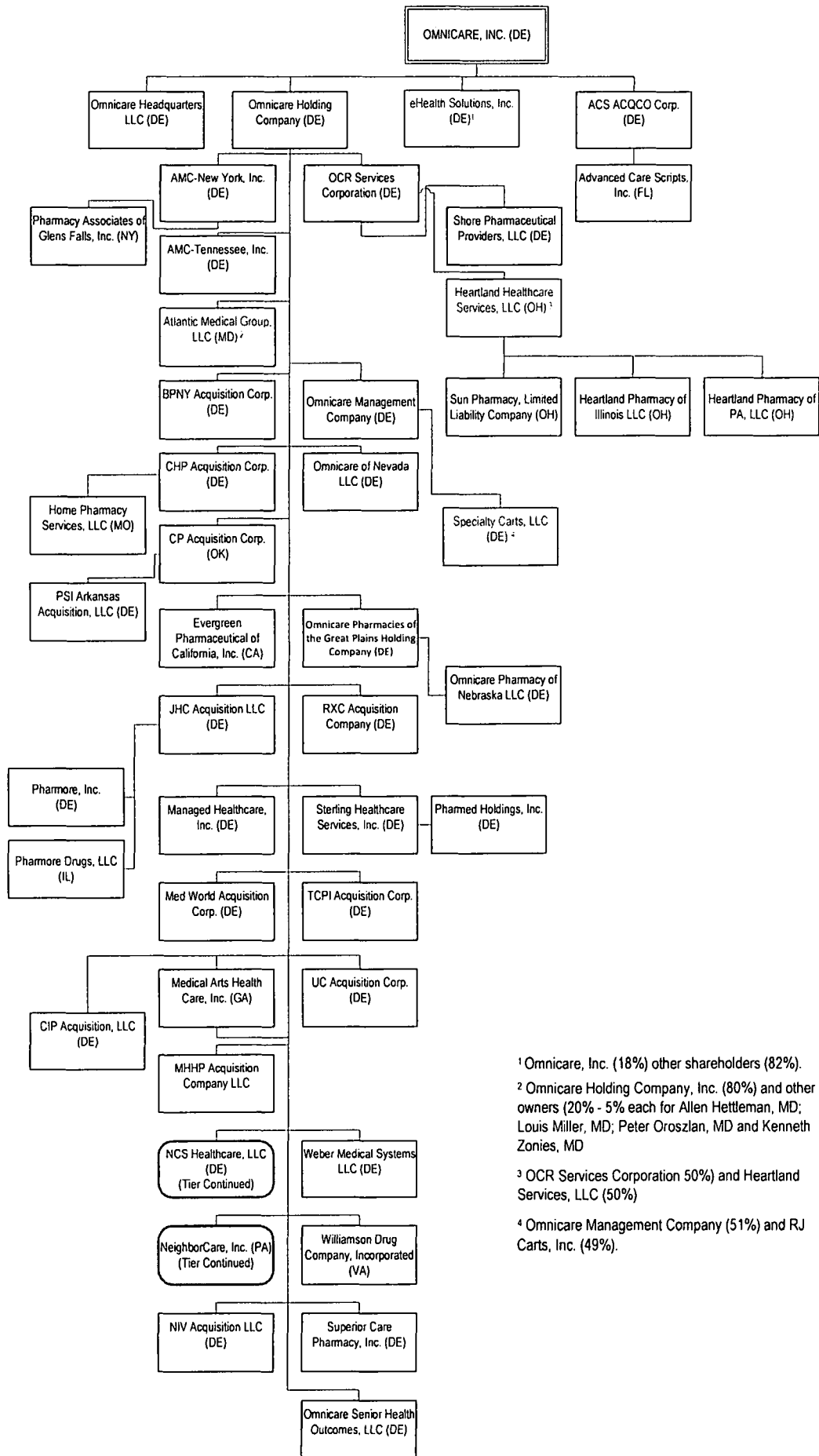
MinuteClinic Diagnostic of Minnesota, P.A.
[Operating: MN]
(C)
47-5140770

Coram
CVS Specialty



¹
 Coram Healthcare Corporation of Alabama
 Coram Healthcare Corporation of Indiana
 Coram Healthcare Corporation of Mississippi
 Coram Healthcare Corporation of Southern California
 Coram Healthcare Corporation of Florida
 Coram Healthcare Corporation of Greater D.C.
 Coram Healthcare Corporation of Greater New York
 Coram Healthcare Corporation of Nevada
 Coram Healthcare Corporation of Northern California
 Coram Healthcare Corporation of Southern Florida

²
 CoramRx, LLC
 Coram Healthcare Corporation of North Texas
 Coram Healthcare Corporation of Utah
 Coram Alternate Site Services, Inc.
 Coram Healthcare Corporation of Massachusetts
 Coram Healthcare/Carolina Home Therapeutics, LLC (51%)



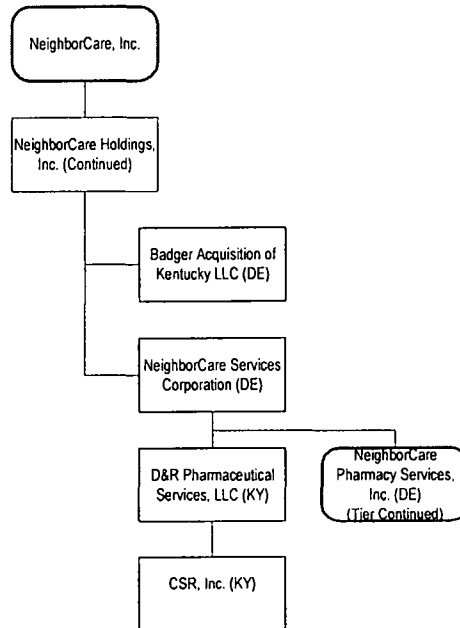
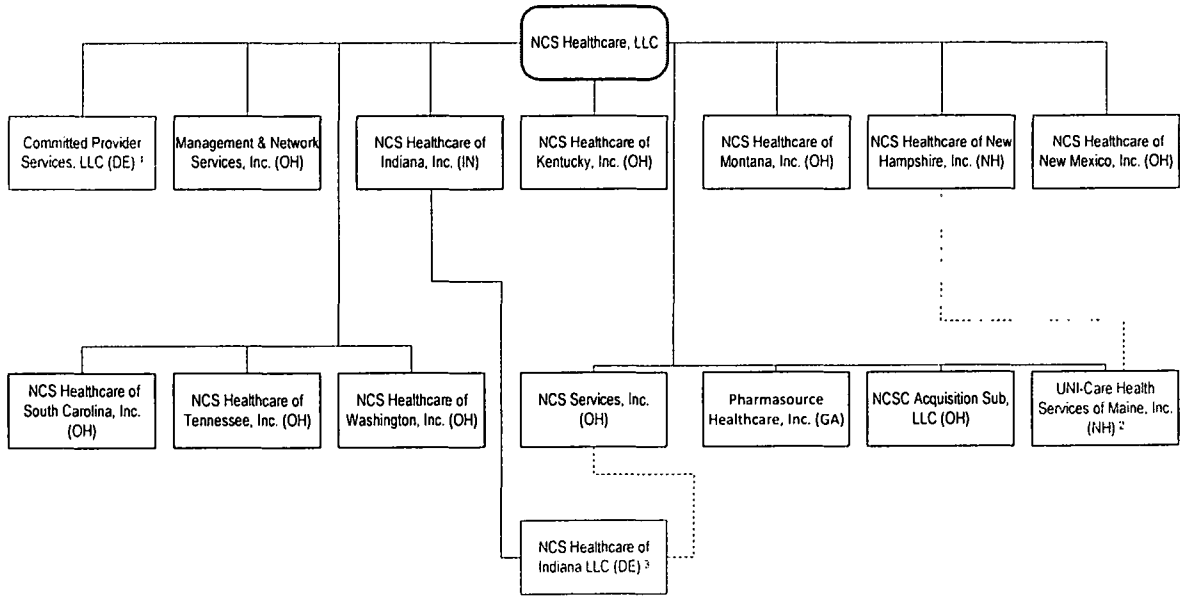
¹ Omnicare, Inc. (18%) other shareholders (82%).

² Omnicare Holding Company, Inc. (80%) and other owners (20% - 5% each for Allen Hettleman, MD; Louis Miller, MD; Peter Oroszlan, MD and Kenneth Zonies, MD)

³ OCR Services Corporation (50%) and Heartland Services, LLC (50%)

⁴ Omnicare Management Company (51%) and RJ Carts, Inc. (49%).

Company breakdown continued....

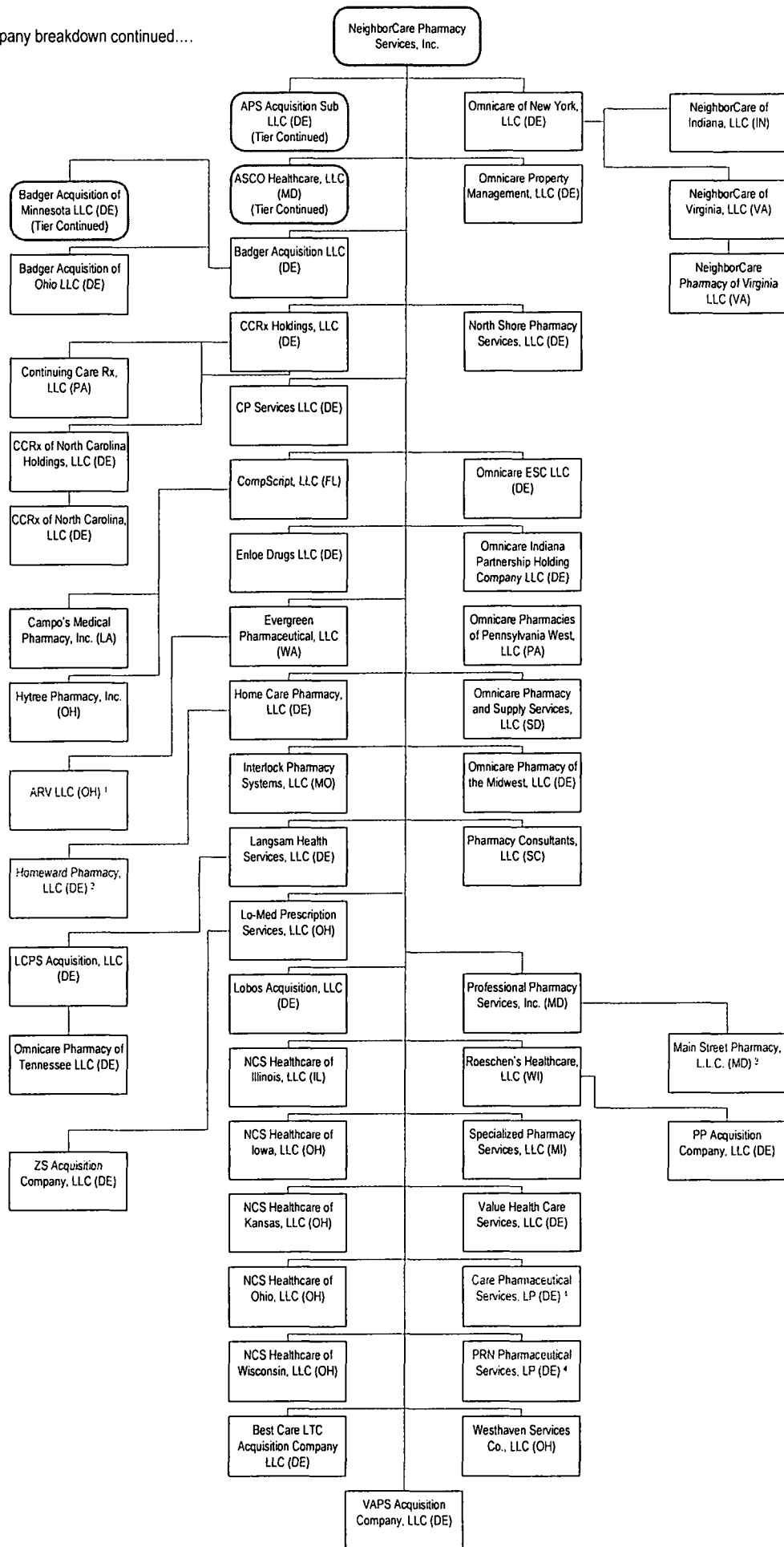


¹ NCS Healthcare, LLC (10%) and Bergen Brunswick (80%).

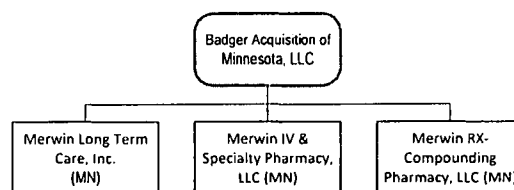
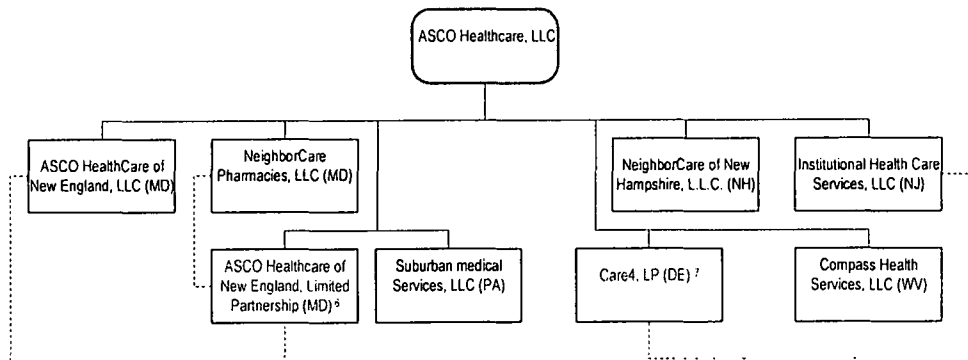
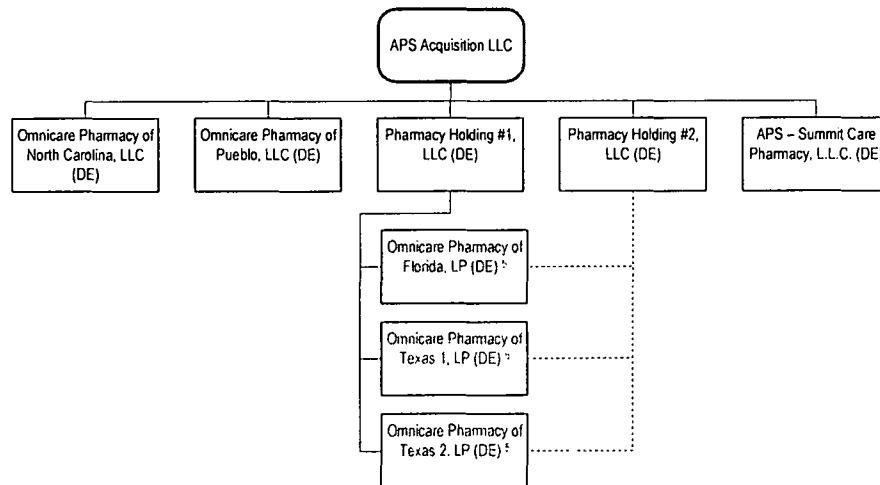
² NCS Healthcare, LLC (13%) and NCS Healthcare of New Hampshire, Inc. (87%).

³ NCS Services, Inc. (1%) and NCS HealthCare of Indiana, Inc. (99%)

Company breakdown continued....



Company breakdown continued....



¹ Evergreen Pharmaceutical, LLC owns (50%) and ARV Assisted Living, Inc. (50%).

² Home Care Pharmacy, LLC (50%) other owner (50%).

³ Professional Pharmacy Services, Inc. (99%) and NeighborCare Pharmacies, LLC (1%).

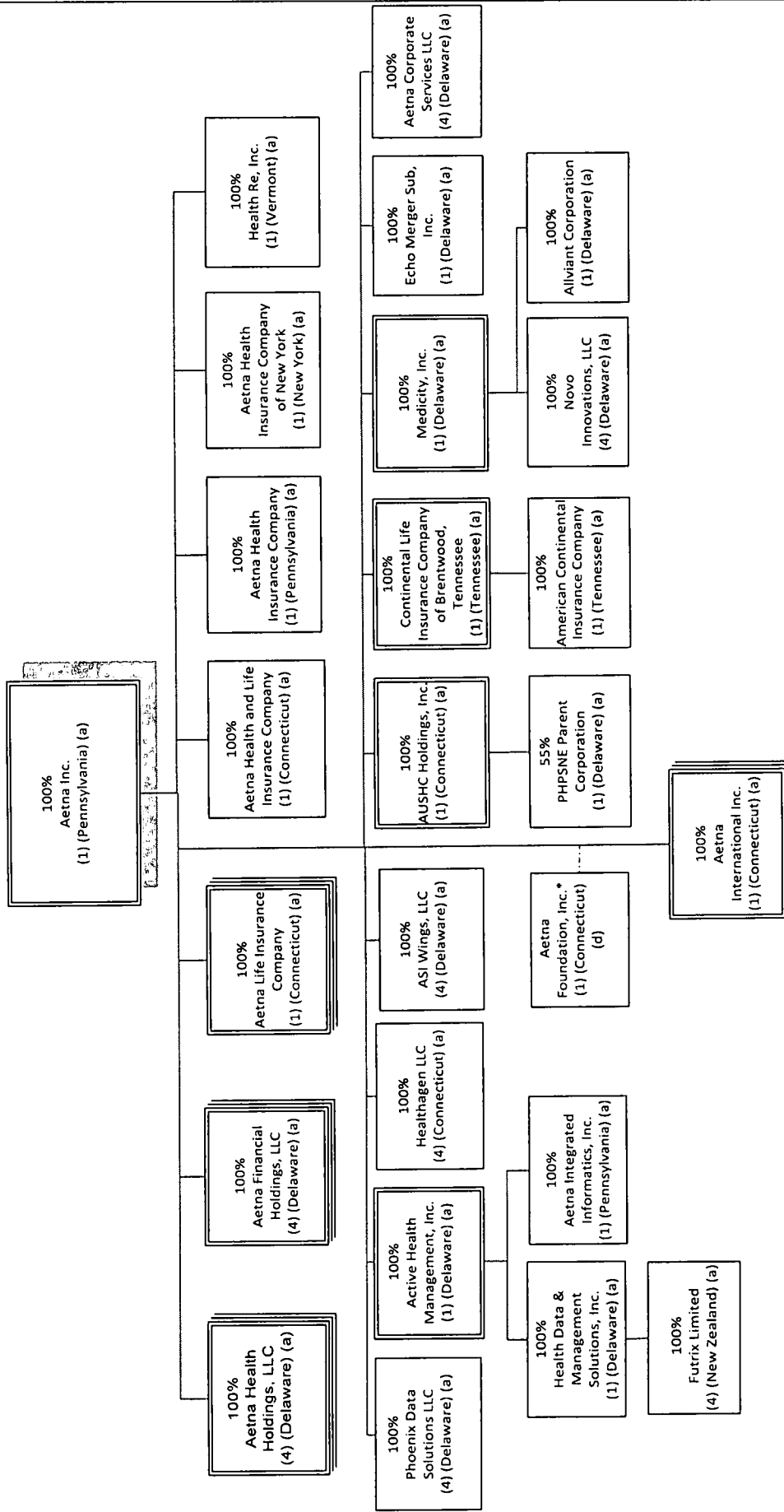
⁴ NeighborCare Pharmacy Services, Inc. (99%) and Omnicare Indiana Partnership Holding Company LLC (1%).

⁵ Pharmacy Holding #1, LLC (99%) and Pharmacy Holding #2, LLC (1%).

⁶ ASCO HealthCare, LLC (54.5%), NeighborCare Pharmacies, LLC (44.5%) and ASCO Healthcare of New England, LLC (1%)

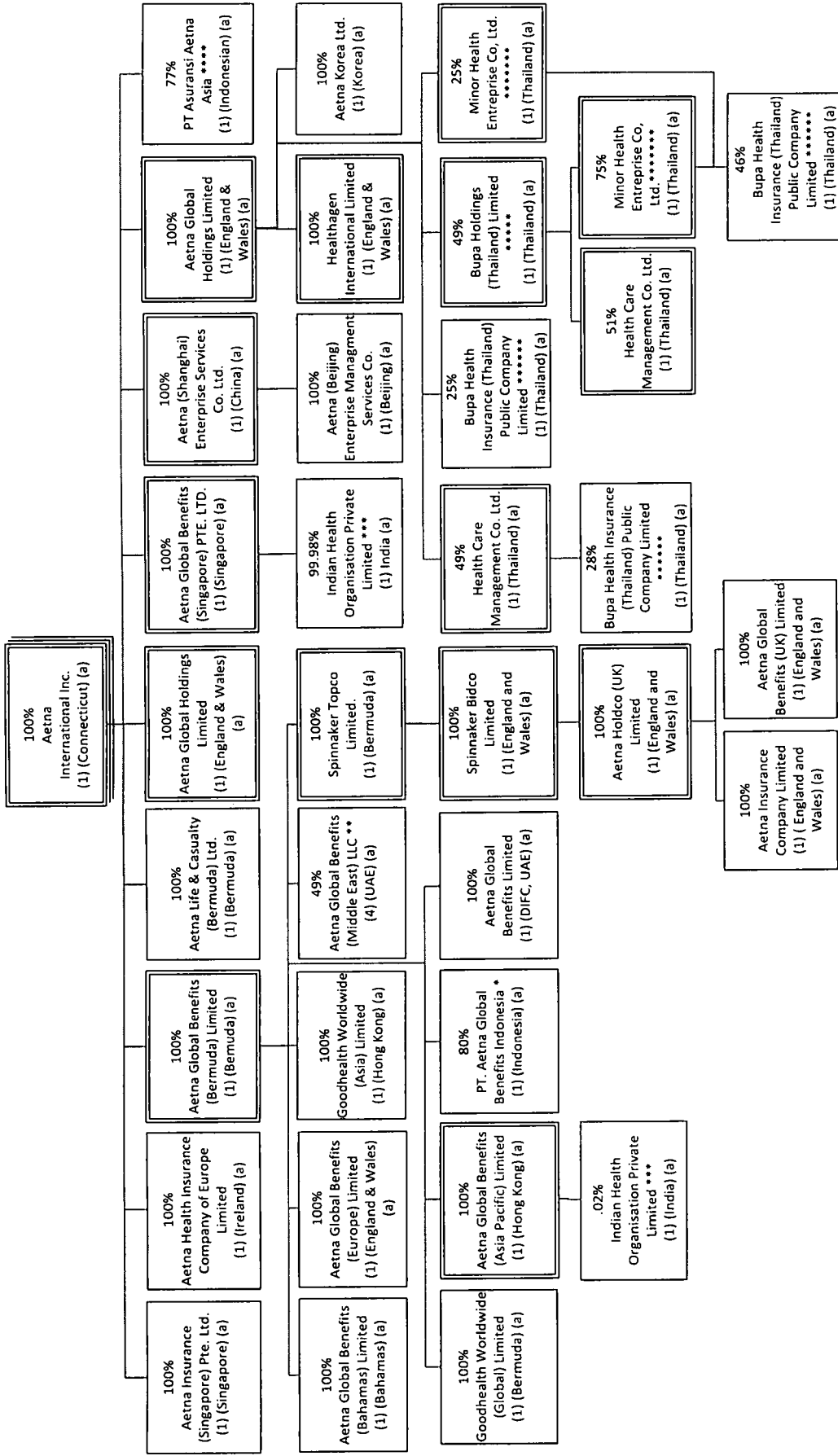
⁷ ASCO HealthCare, LLC (99.5%) and Institutional Health Care Services, LLC (.05%).

Aetna Inc. Organization Chart
As of December 5, 2017

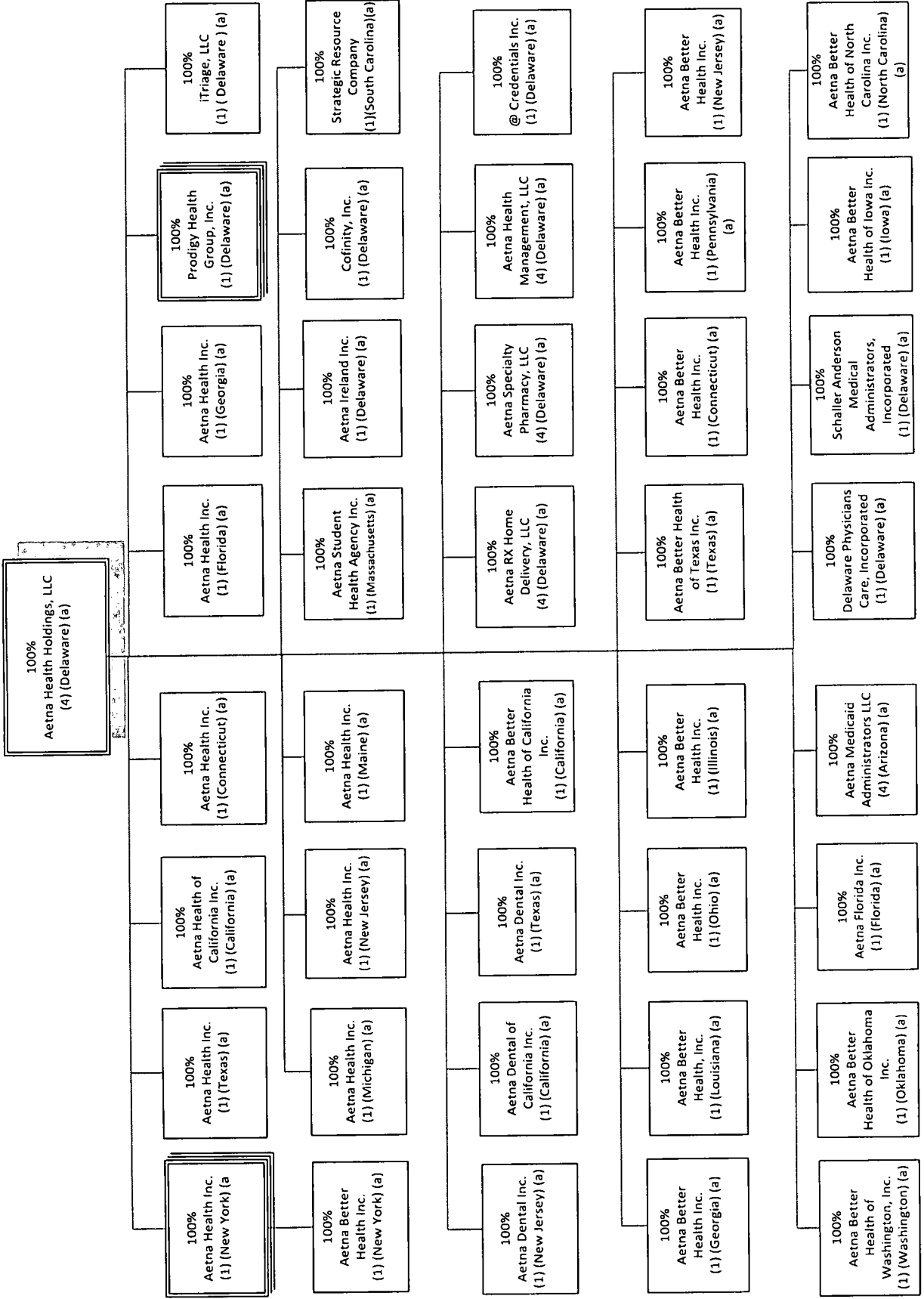


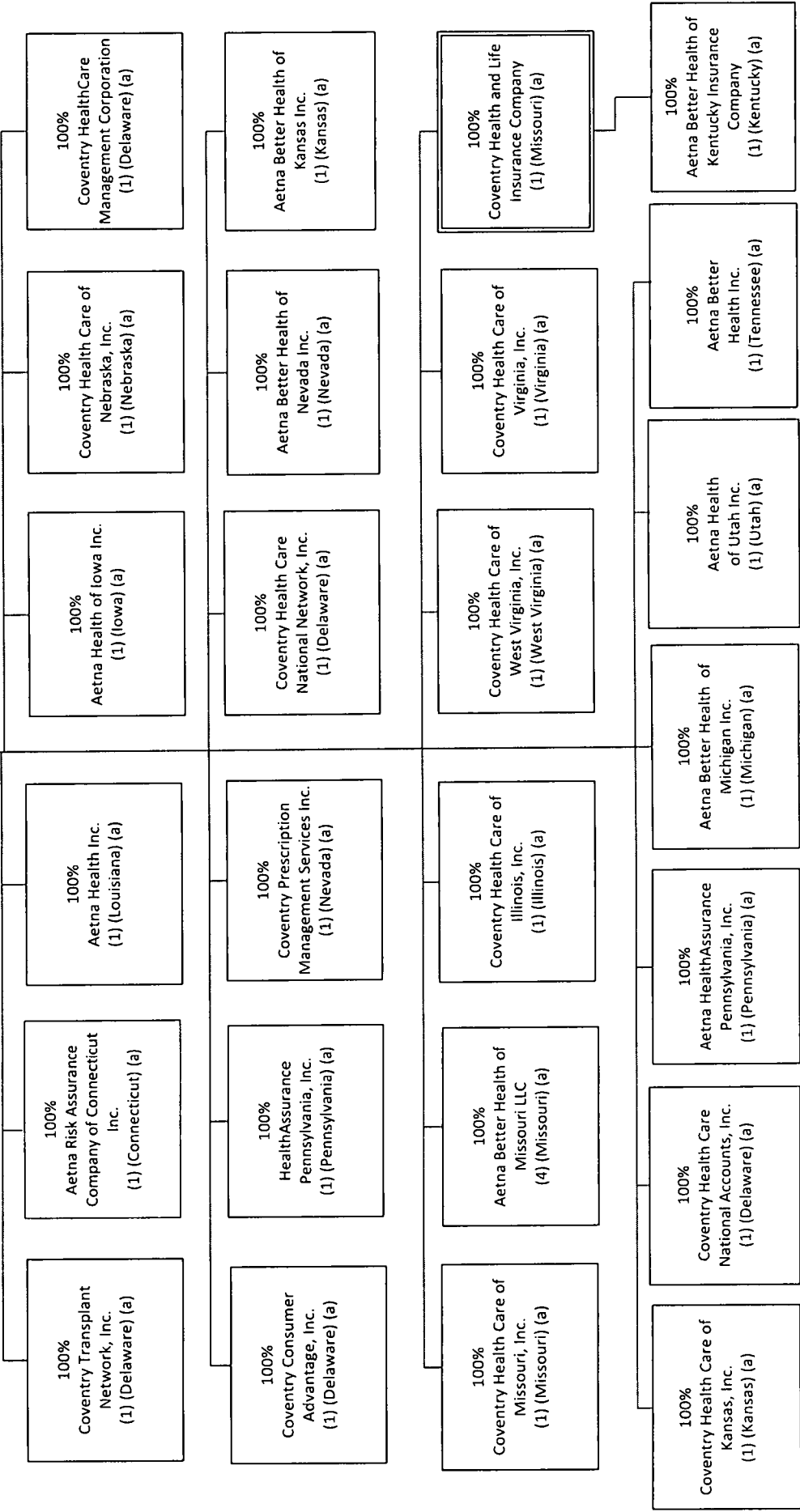
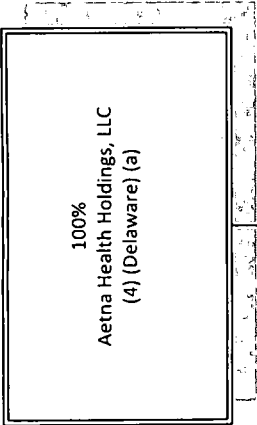
- (1) Corporation
- (2) Partnership
- (3) Joint Venture
- (4) Limited Liability Company
- (5) Trust
- (a) Consolidated
- (b) One Line Consolidation (i.e., equity method)
- (c) Separate Account Asset
- (d) Not consolidated

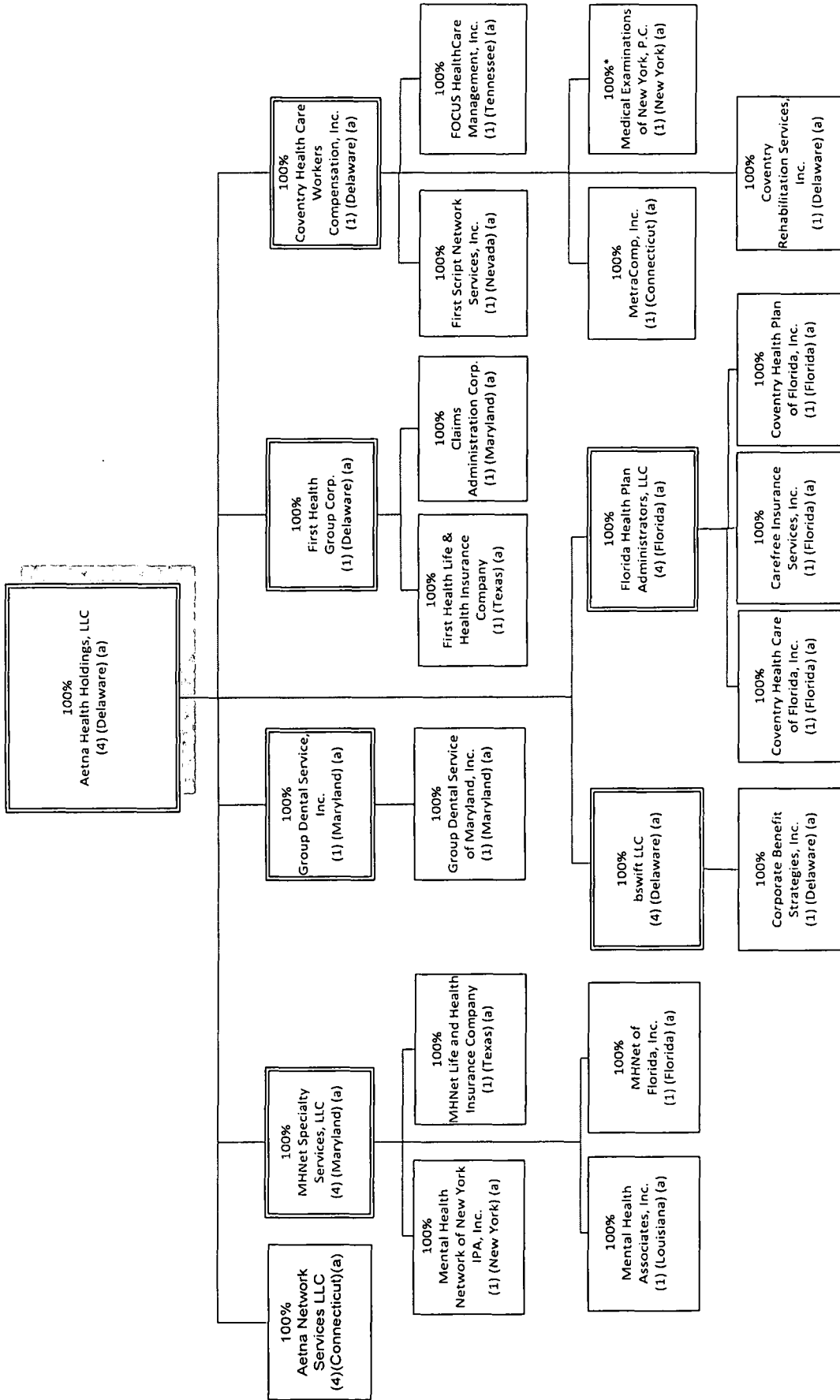
Percentages are rounded to nearest whole percent and are based on ownership of voting rights.
* Nonstock Corporation: Aetna does not control this entity. Stand-alone.



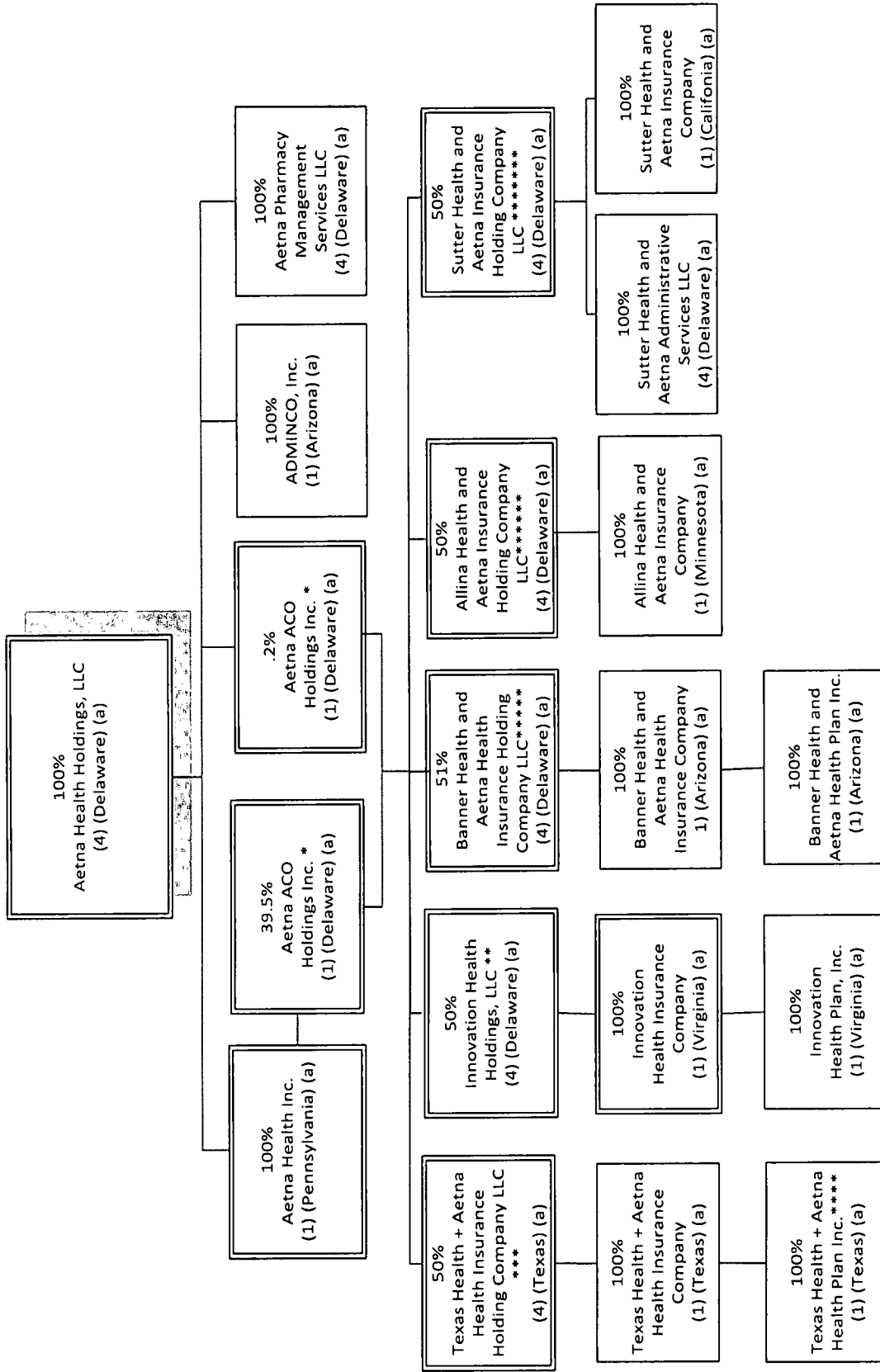
* PT. Aetna Global Benefits Indonesia is 80% owned by Aetna Global Benefits (Bermuda) Limited, and 20% owned by Suhatsyah Rivai, Aetna's Nominee
 ** Aetna Global Benefits (Middle East) LLC is 49% owned by Aetna Global Benefits (Bermuda) Limited, and 51% owned by Euro Gulf LLC, Aetna's Nominee
 *** Indian Health Organisation Private Limited is 0.019857% owned by Aetna Global Benefits (Asia Pacific); 99.980143% owned by Aetna Global Benefits (Singapore) PTE, LTD.
 **** PT Asuransi Aetna Asia is 77% owned by Aetna International Inc.; and 23% owned by PT Asuransi Central Asia
 ***** Bupa Holdings (Thailand) Limited is 51% owned by Mr. Paiboon Sutanivorakoon
 ***** Bupa Health Insurance (Thailand) Public Company Limited is 46% owned by Minor Health Enterprise Co. Ltd.; 25% owned by Aetna Global Holdings Limited; and 28% owned by Health Care Management Co. Ltd. and total 1% owned by Aetna Global Benefits (Bermuda) Limited (1 Share), Mr. Sansanapongherchar (1 Share) Mr. Jitphasong Itsaraphakded (1 Share), Mrs. Suphee Wattana (1 Share), Mr. Buncha Tamphragom (1 Share)
 ***** Minor Health Enterprise Co. Ltd is (1 share) owned by Aetna Global Benefits (Bermuda) Limited







*100% owned through Aetna's Nominees



* Aetna ACO Holdings Inc. is owned by Aetna Life Insurance Company (302 shares); Aetna Health Inc. (PA) (198 shares); and Aetna Health Holdings, LLC (1 share).

** Innovation Health Holdings, LLC is 50% owned by Aetna ACO Holdings Inc. and 50% owned by Inova Health System Foundation

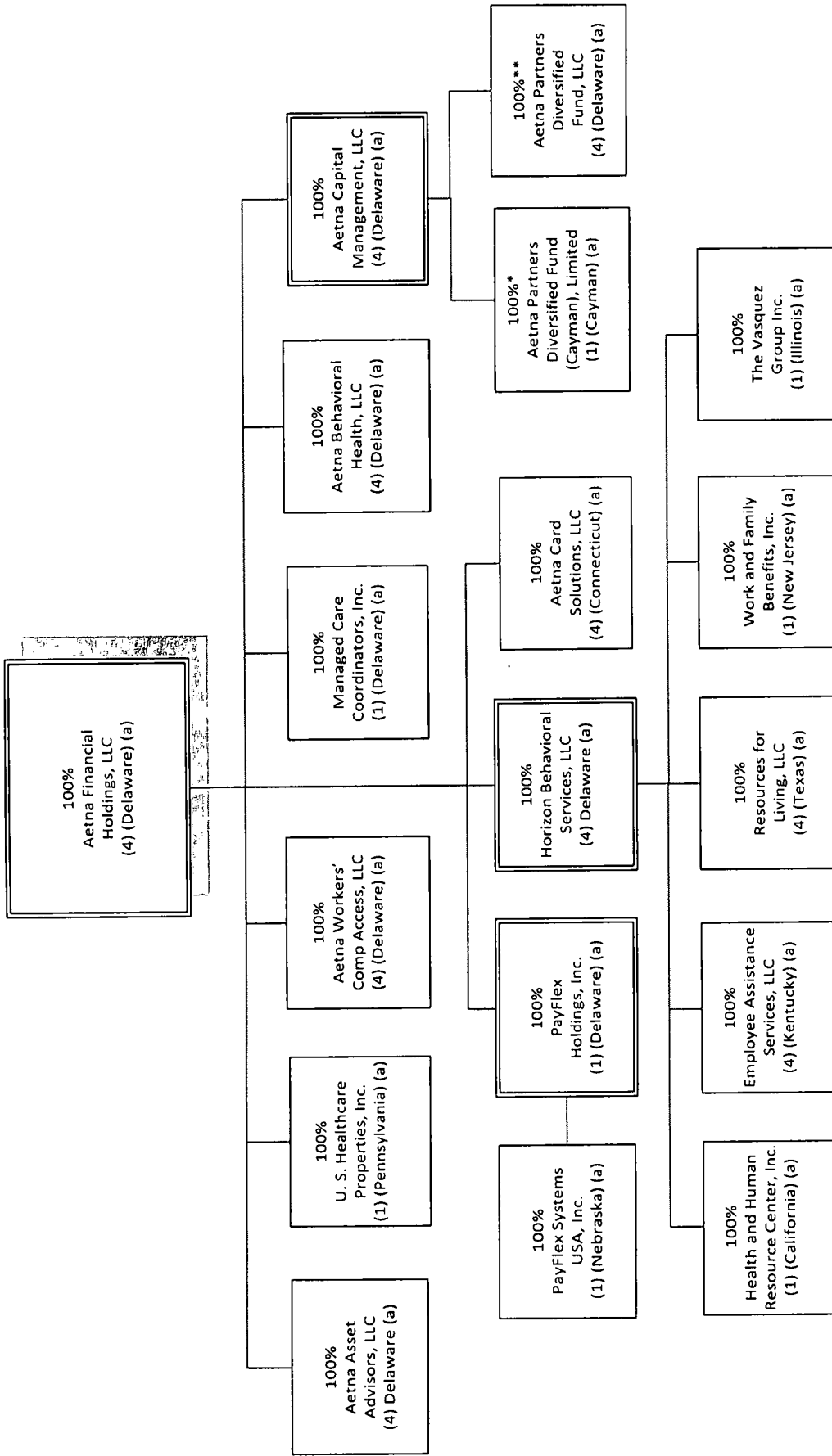
*** Texas Health + Aetna Health Insurance Holding Company LLC is 50% owned by Aetna ACO Holdings Inc. and 50% owned by Texas Health Resources

**** Texas Health + Aetna Health Plan Inc. became a direct subsidiary of Texas Health + Aetna Health Insurance Company February 2017

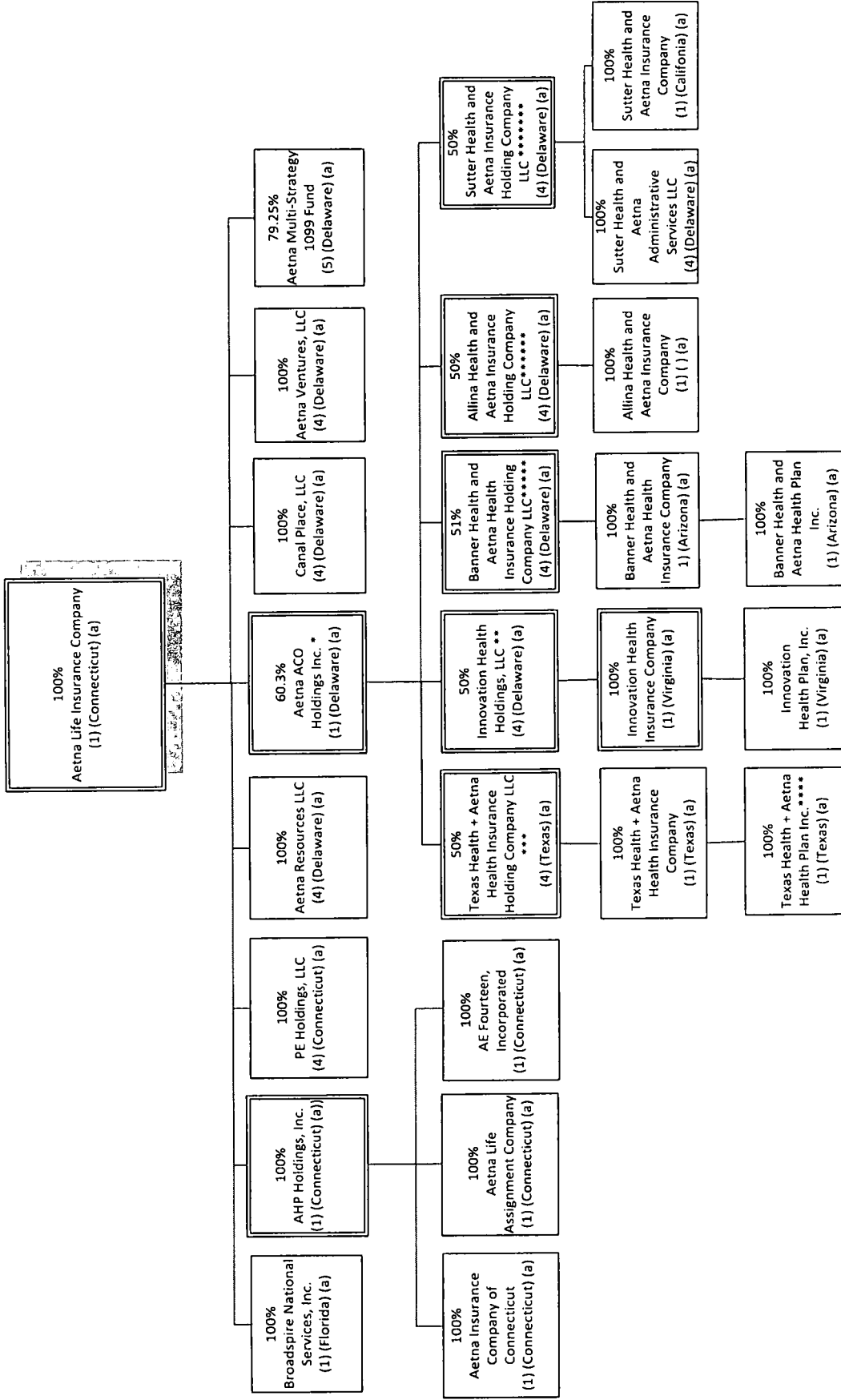
***** Banner Health and Aetna Health Insurance Holding Company LLC is 51% owned by Aetna ACO Holdings Inc. and 49% owned by Banner Health

***** Allina Health and Aetna Health Insurance Holding Company LLC is 50% owned by Aetna ACO Holdings Inc.; and 50% owned by Allina Health

***** Sutter Health and Aetna Health Insurance Holding Company LLC is 50% owned by Aetna ACO Holdings Inc.; and 50% owned by Sutter Health Plan Products Organization, LLC



* Aetna Life Insurance Company owns the Class C participating shares of Aetna Partners Diversified Fund (Cayman), Limited.
 ** Aetna Life Insurance Company, Aetna Health and Life Insurance Company and Aetna Health Management own substantially all of the non-managing member interests of Aetna Partners Diversified Fund, LLC.



* Aetna ACO Holdings Inc. is owned by Aetna Life Insurance Company (302 shares); Aetna Health Inc. (PA) (198 shares); and Aetna Health Holdings, LLC (1 share).
 ** Innovation Health Holdings, LLC is 50% owned by Aetna ACO Holdings Inc. and 50% owned by Inova Health System Foundation
 *** Texas Health + Aetna Health Insurance Holding Company LLC is 50% owned by Aetna ACO Holdings Inc. and 50% owned by Texas Health Resources
 **** Texas Health + Aetna Health Plan Inc. became a direct subsidiary of Texas Health + Aetna Health Insurance Company February 2017
 ***** Banner Health and Aetna Health Insurance Holding Company LLC is 51% owned by Aetna ACO Holdings Inc. and 49% owned by Banner Health
 ***** Allina Health and Aetna Insurance Holding Company LLC is 50% owned by Aetna ACO Holdings Inc.; and 50% owned by Allina Health
 ***** Sutter Health and Aetna Insurance Holding Company LLC is 50% owned by Aetna ACO Holdings Inc.; and 50% owned by Sutter Health Plan Products Organization, LLC

